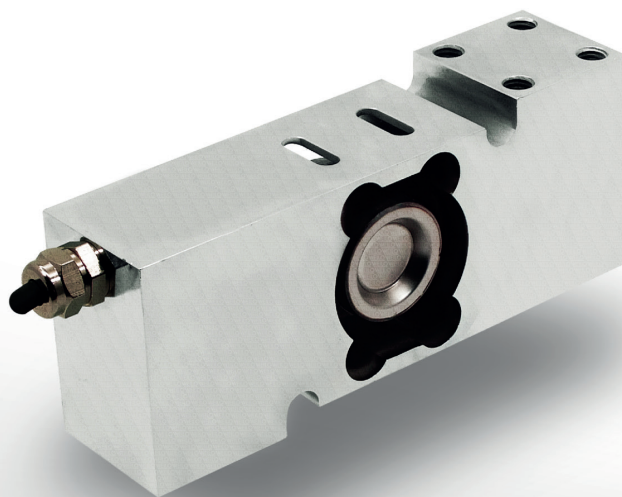


SP12 Single Point Load Cell



Load cell made of special alloy aluminum material, used in applications where low capacity precision weighing is required.

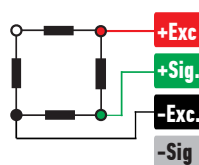


ABOUT PRODUCT

SP12 platform type load cell is produced from special alloy aluminum material, it becomes more resistant to environmental conditions with anodized coating.

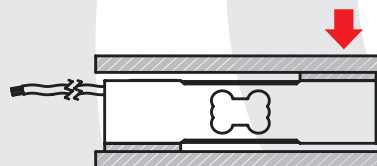
It can be used alone in scale manufacturing applications, has high performance and high capacity.

CONNECTION DIAGRAM

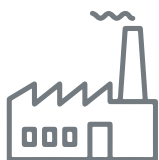


Red	Excitation+ (Input)
Green	Signal+ (Output)
Black	Excitation- (Input)
White	Signal- (Output)

WORK STYLE



APPLICATION AREAS



Machinery and Industry



Chemistry - Petrochemistry



Food



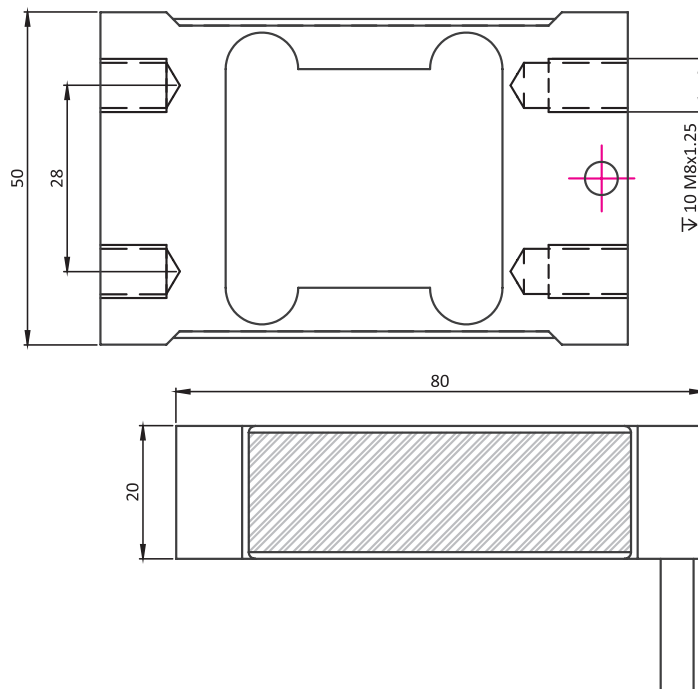
Agriculture And Livestock

FEATURES

- ✓ IP 65 protection class
- ✓ Aluminium
- ✓ Ease of installation

SP12 Single Point Load Cell

TECHNICAL DRAWING



PLATFORM MEASUREMENTS

4 kg - 30 kg: 200 x 200 mm

TECHNICAL SPECIFICATIONS

Capacity	4, 5, 6, 8, 10, 20, 30 kg
Accuracy Class	G
Minimum Load	0 kg
Maximum Intervals (nLC)	-
Minimum Verification Interval	-
Total Error	± 0.02 %FS
Output Sensitivity (FS)	1.00 ± 0.01 mV/V
Zero Balance	± 1 %FS
Input Resistance	$400 \Omega \pm 20 \Omega$
Output Resistance	$352 \Omega \pm 3 \Omega$
Isolation Resistance	≤ 5000 M Ω (100VDC)
Compensated Temperature	10 ~ + 40 °C
Operating Temperature	30 ~ + 70 °C
Excitation, Recommended Voltage	10 VDC
Maximum Excitation Voltage (U _{max})	15 VDC
Safe Overload	120 % FS
Ultimate Overload	200 % FS
Ingress Protection (EN60529)	IP 65
Element Material	Aluminium
Cable	4x0.22mm ²