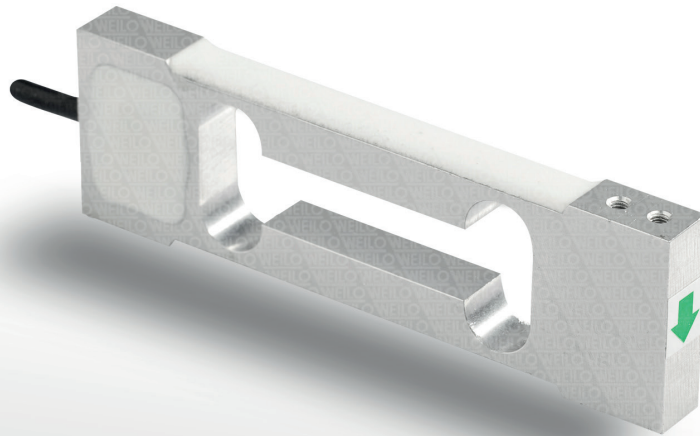


SP11 Single Point Load Cell



www.weilo.com.tr

Load cell made of special alloy aluminum material, used in applications where low capacity precision weighing is required.



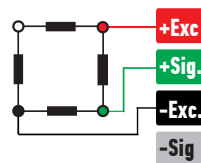
ABOUT PRODUCT

SP11 platform type load cell is produced from special alloy aluminum material, with anodized coating it becomes more resistant against environmental conditions.

It can be used alone in applications where low-capacity precision weighing is required. It has high performance and high capacity.

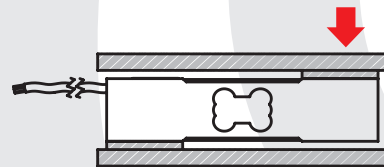
You can contact our sales engineers to get technical support for your weighing, automation and force test applications. You can be sure that our experienced sales team will assist you in any matter by phone or email or in the application area.

CONNECTION DIAGRAM

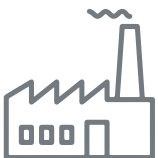


| | |
|-------|---------------------|
| Red | Excitation+ (Input) |
| Green | Signal+ (Output) |
| Black | Excitation- (Input) |
| White | Signal- (Output) |

WORK STYLE



APPLICATION AREAS



Machinery and Industry



Chemistry - Petrochemistry



Food



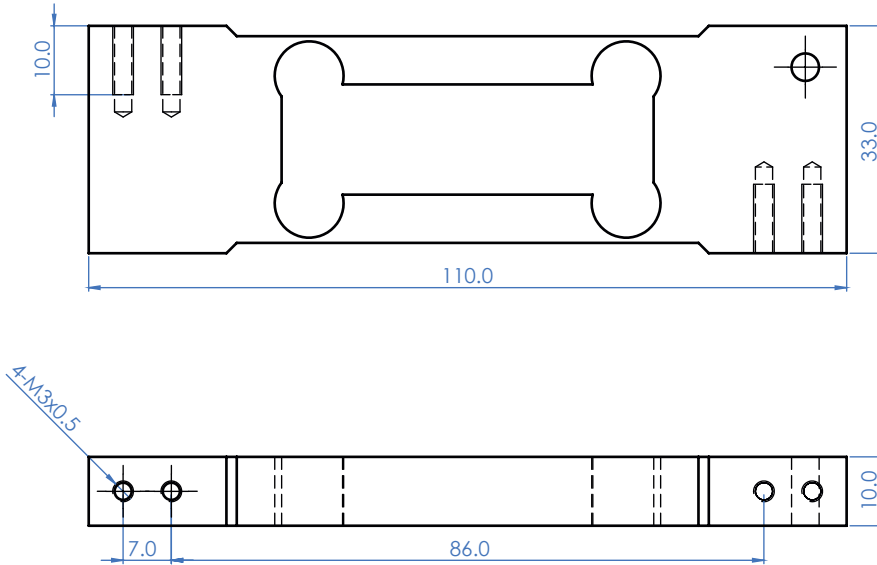
Agriculture And Livestock

FEATURES

- ✓ IP 65 protection class
- ✓ Aluminium
- ✓ Ease of installation

SP11 Single Point Load Cell

TECHNICAL DRAWING



PLATFORM MEASUREMENTS

0.3 kg - 6 kg: 200 x 200 mm

TECHNICAL SPECIFICATIONS

| | |
|--|---------------------------------|
| Capacity | 0.3, 0.6, 1, 1.5, 2, 3, 6 kg |
| Accuracy Class | G |
| Minimum Load | 0 kg |
| Maximum Intervals (nLC) | - |
| Minimum Verification Interval | - |
| Total Error | ± 0.02 %FS |
| Output Sensitivity (FS) | 1.00 ± 0.01 mV/V |
| Zero Balance | ± 1 %FS |
| Input Resistance | $400 \Omega \pm 20 \Omega$ |
| Output Resistance | $352 \Omega \pm 3 \Omega$ |
| Isolation Resistance | ≤ 5000 M Ω (100VDC) |
| Compensated Temperature | 10 ~ + 40 °C |
| Operating Temperature | 30 ~ + 70 °C |
| Excitation, Recommended Voltage | 10 VDC |
| Maximum Excitation Voltage (U _{max}) | 15 VDC |
| Safe Overload | 120 % FS |
| Ultimate Overload | 200 % FS |
| Ingress Protection (EN60529) | IP 65 |
| Element Material | Aluminium |
| Cable | 4x0.22mm ² |