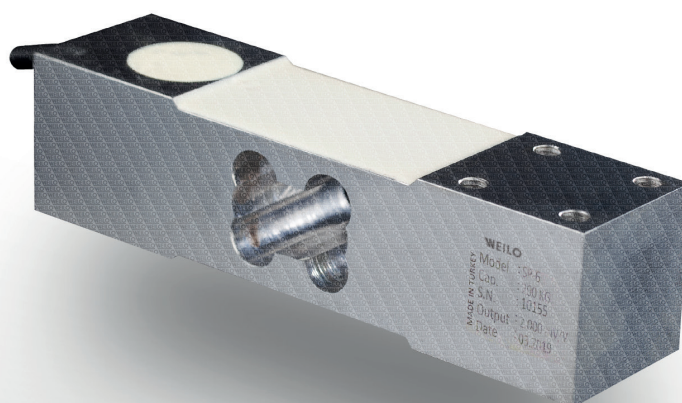


SP6 Single Point Load Cell



A load cell made of special alloyed aluminum material that can be used in platform scale applications.



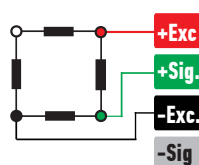
ABOUT PRODUCT

SP6 platform type load cell is produced from special alloy aluminum material, with anodized coating, it becomes more resistant to environmental conditions.

It can be used alone in platform scale applications, has high performance and high capacity.

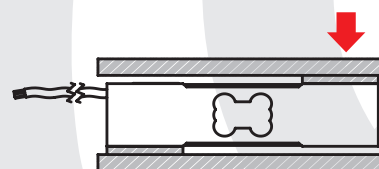
You can contact our sales engineers to get technical support regarding your weighing, automation and force test applications.

CONNECTION DIAGRAM

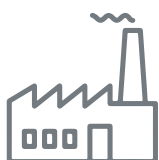


Red	Excitation+ (Input)
Green	Signal+ (Output)
Black	Excitation- (Input)
White	Signal- (Output)

WORK STYLE



APPLICATION AREAS



Machinery and Industry



Chemistry - Petrochemistry



Food

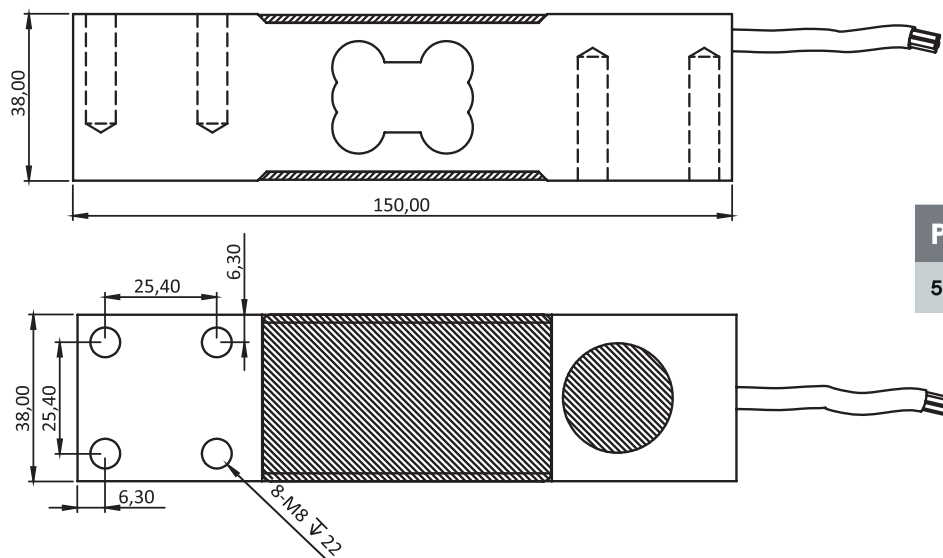


Agriculture and Livestock

FEATURES

- ✓ IP 65 protection class
- ✓ Aluminium
- ✓ Ease of installation

TECHNICAL DRAWING



PLATFORM MEASUREMENTS

50 kg - 250 kg: 400 x 400 mm

TECHNICAL SPECIFICATIONS

Capacity	50, 100, 150, 200, 250 kg
Accuracy Class	C3
Minimum Load	0 kg
Maximum Intervals (nLC)	3000
Minimum Verification Interval	10000
Total Error	± 0.02 %FS
Output Sensitivity (FS)	2.00 ± 0.01 mV/V
Zero Balance	± 1 %FS
Input Resistance	$400 \Omega \pm 20 \Omega$
Output Resistance	$352 \Omega \pm 3 \Omega$
Isolation Resistance	≤ 5000 M Ω (100VDC)
Compensated Temperature	-10 ~ + 40 °C
Operating Temperature	-30 ~ + 70 °C
Excitation, Recommended Voltage	10 VDC
Maximum Excitation Voltage (U _{max})	15 VDC
Safe Overload	120 % FS
Ultimate Overload	200 % FS
Ingress Protection (EN60529)	IP 65
Element Material	Aluminium
Cable	4x0.22mm ²