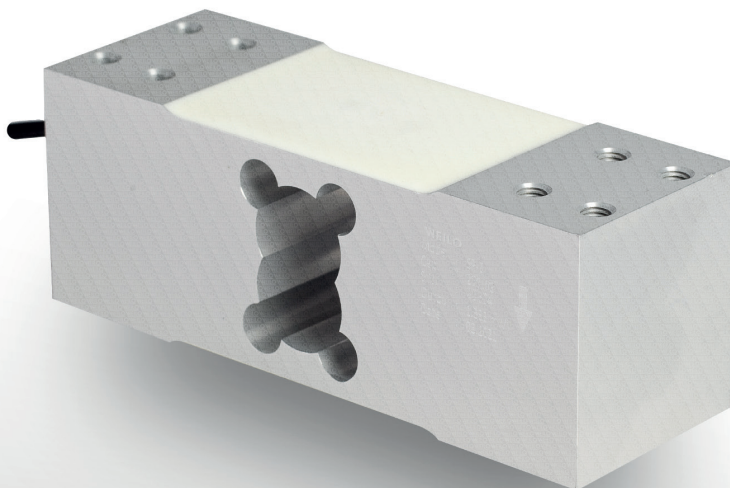


# SP3 Single Point Load Cell



A load cell made of special alloyed aluminum material that can be used in platform scale applications.



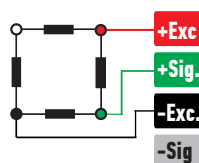
## ABOUT PRODUCT

SP3 platform type load cell is produced from special alloy aluminum material, it becomes more resistant to environmental conditions with anodized coating.

It can be used alone in platform scale applications, has high performance and high capacity.

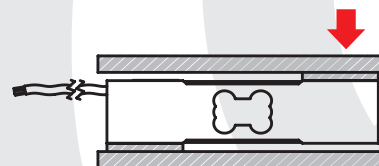
You can contact our sales engineers to get technical support regarding your weighing, automation and force test applications.

## CONNECTION DIAGRAM

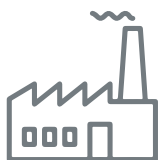


Red	Excitation+ (Input)
Green	Signal+ (Output)
Black	Excitation- (Input)
White	Signal- (Output)

## WORK STYLE



## APPLICATION AREAS



Machinery and Industry



Chemistry - Petrochemistry



Food

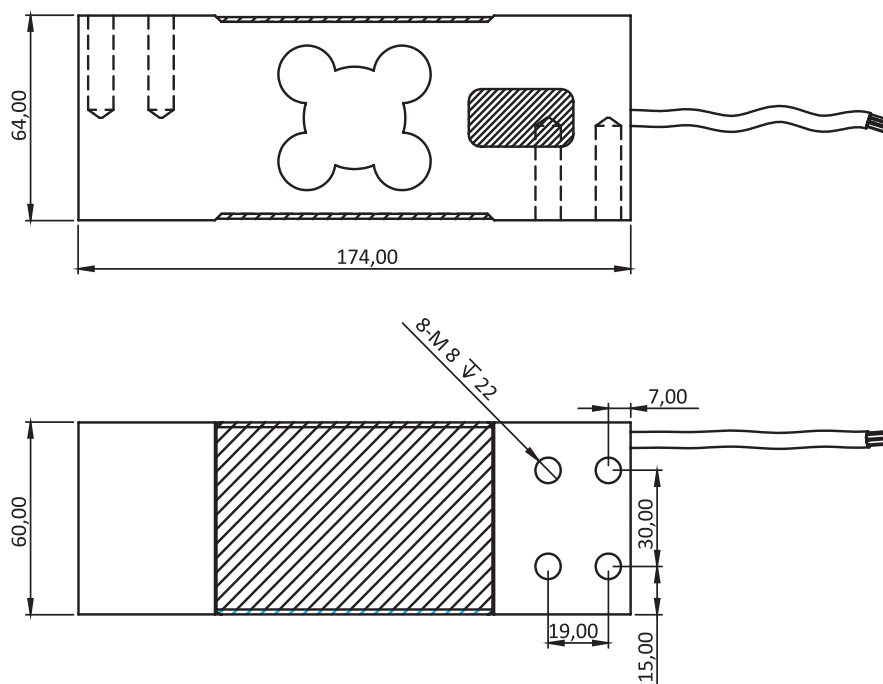


Agriculture and Livestock

## FEATURES

- ✓ IP 65 protection class
- ✓ Aluminium
- ✓ Ease of installation

## TECHNICAL DRAWING



## PLATFORM MEASUREMENTS

50 kg - 600 kg: 600 x 600 mm

## TECHNICAL SPECIFICATIONS

Capacity	50, 100, 150, 200, 250, 300, 500, 600 kg
Accuracy Class	C3
Minimum Load	0 kg
Maximum Intervals (nLC)	3000
Minimum Verification Interval	10000
Total Error	$\pm 0.02$ %FS
Output Sensitivity (FS)	$2.00 \pm 0.01$ mV/V
Zero Balance	$\pm 1$ %FS
Input Resistance	$400 \Omega \pm 20 \Omega$
Output Resistance	$352 \Omega \pm 3 \Omega$
Isolation Resistance	$\leq 5000$ M $\Omega$ (100VDC)
Compensated Temperature	-10 ~ + 40 °C
Operating Temperature	-30 ~ + 70 °C
Excitation, Recommended Voltage	10 VDC
Maximum Excitation Voltage (U <sub>max</sub> )	15 VDC
Safe Overload	120 % FS
Ultimate Overload	200 % FS
Ingress Protection (EN60529)	IP 65
Element Material	Aluminium
Cable	4x0.22mm <sup>2</sup>