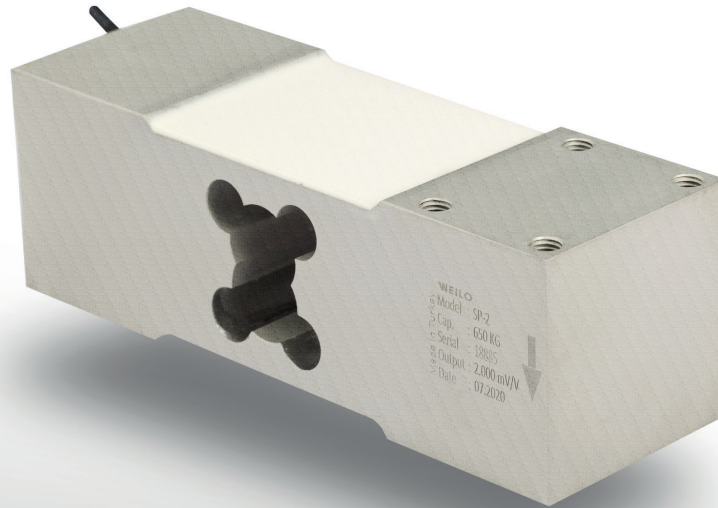


# SP2 Single Point Load Cell



A load cell made of special alloyed aluminum material that can be used in platform scale applications.



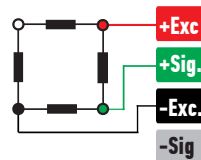
## ABOUT PRODUCT

SP2 platform type load cell is produced from special alloy aluminum material, it becomes more resistant to environmental conditions with anodized coating.

It can be used alone in platform scale applications, has high performance and high capacity.

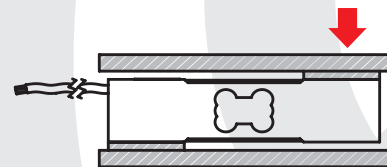
You can contact our sales engineers to get technical support regarding your weighing, automation and force test applications.

## CONNECTION DIAGRAM

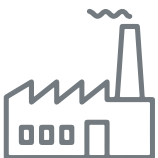


Red	Excitation+ (Input)
Green	Signal+ (Output)
Black	Excitation- (Input)
White	Signal- (Output)

## WORK STYLE



## APPLICATION AREAS



Machinery and Industry



Chemistry - Petrochemistry



Food

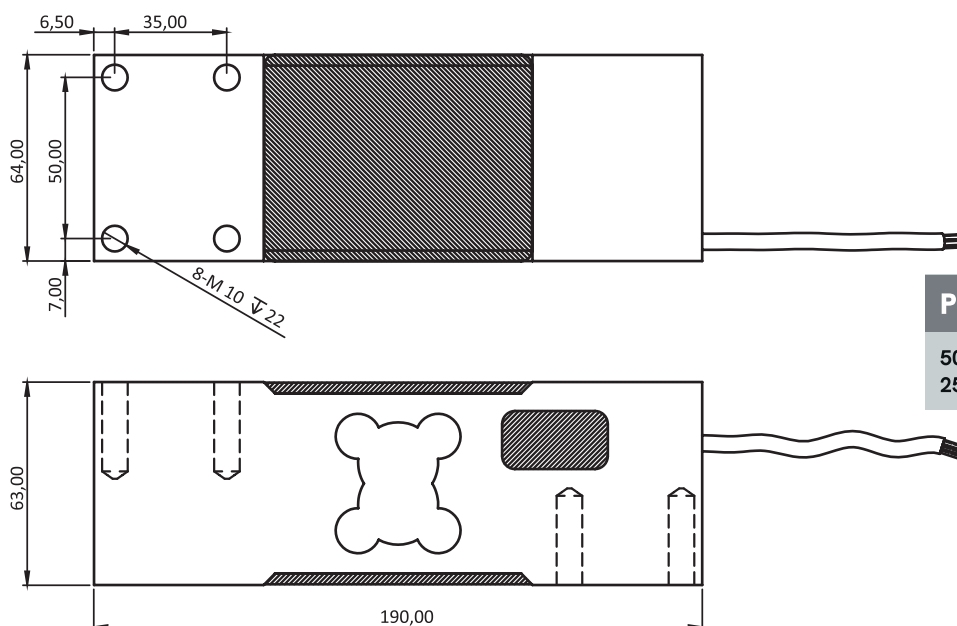


Agriculture and Livestock

## FEATURES

- ✓ IP 65 protection class
- ✓ Aluminium
- ✓ Ease of installation

## TECHNICAL DRAWING



### PLATFORM MEANSURAMENTS

50 kg - 200 kg: 600 x 600 mm  
250 kg - 635 kg: 600 x 800 mm

## TECHNICAL SPECIFICATIONS

Capacity	50, 100, 150, 200, 250, 300, 500, 635 kg
Accuracy Class	C3
Minimum Load	0 kg
Maximum Intervals (nLC)	3000
Minimum Verification Interval	7000
Total Error	±0.02 %FS
Output Sensitivity (FS)	2.00 ± 0.01mV/V
Zero Balance	± 1 %FS
Input Resistance	400 Ω ± 20 Ω
Output Resistance	352 Ω ± 3 Ω
Isolation Resistance	≤ 5000 MΩ (100VDC)
Compansated Temperature	-10 ~ + 40 °C
Operating Temperature	-30 ~ + 70 °C
Excitation, Recommended Voltage	10 VDC
Maximum Excitation Voltage (Umax)	15 VDC
Safe Overload	120 % FS
Ultimate Overload	200 % FS
Ingress Protection (EN60529)	IP 65
Element Material	Aluminium
Cable	4x022mm <sup>2</sup>