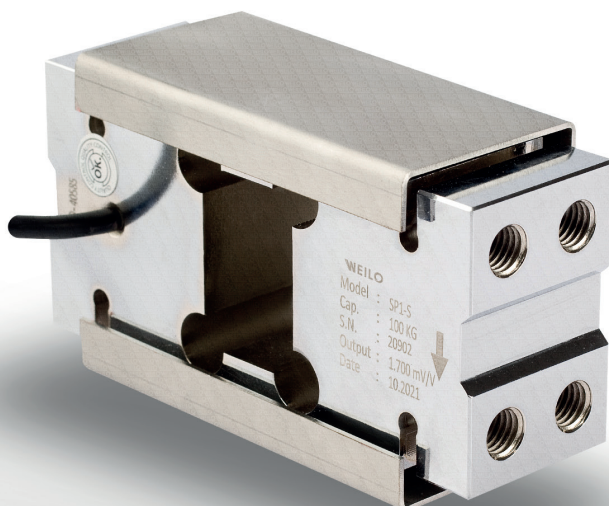


# SP1-S Single Point Load Cell



A load cell made of alloy steel material used in scale applications and belt scales.

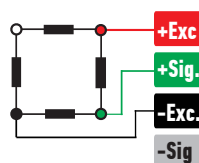


## ABOUT PRODUCT

SP1-S Platform Type Load Cell is produced from special alloy aluminum material, it becomes more resistant to environmental conditions with nickel coating.

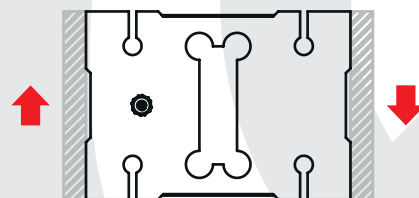
It can be used alone in platform scale applications, It has high performance and high capacity.

## CONNECTION DIAGRAM

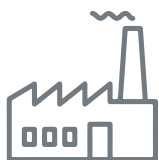


Red	Excitation+ (Input)
Green	Signal+ (Output)
Black	Excitation- (Input)
White	Signal- (Output)

## WORK STYLE



## APPLICATION AREAS



Machinery and Industry



Chemistry - Petrochemistry



Food

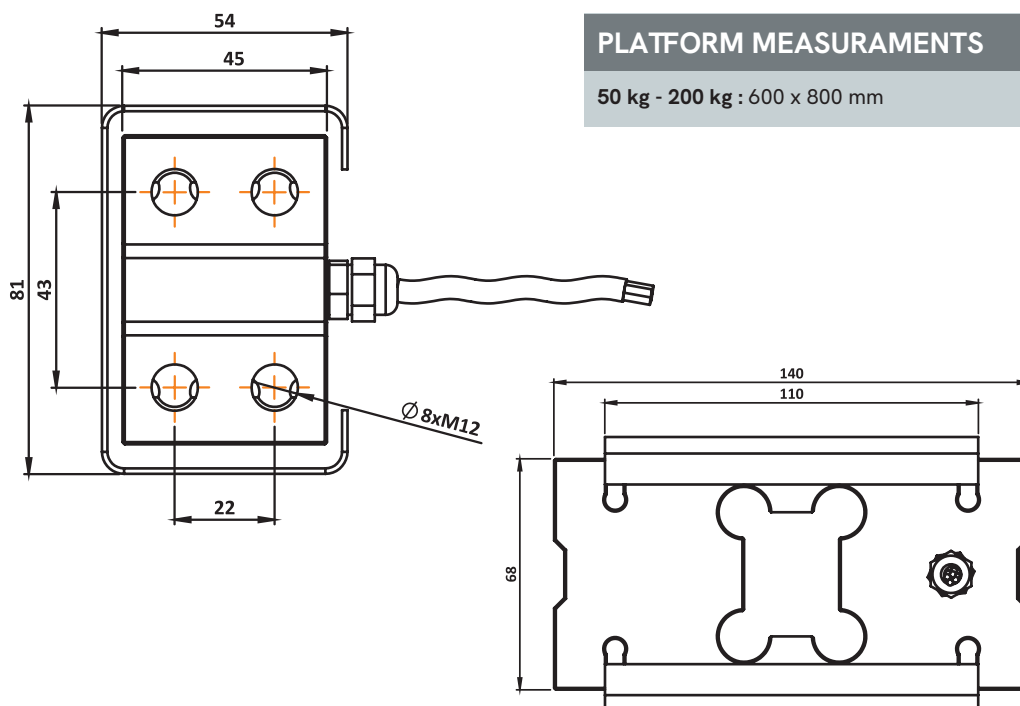


Agriculture and Livestock

## FEATURES

- ✓ IP 65 protection class
- ✓ Alloyed Steel
- ✓ Ease of installation

## TECHNICAL DRAWING



## TECHNICAL SPECIFICATIONS

Capacity	100 ~ 1000 kg
Accuracy Class	C3
Minimum Load	0 kg
Maximum Intervals (nLC)	3000
Minimum Verification Interval	7000
Total Error	$\pm 0.02$ %FS
Output Sensitivity (FS)	$2.00 \pm 0.01$ mV/V
Zero Balance	$\pm 1$ %FS
Input Resistance	$400 \Omega \pm 20 \Omega$
Output Resistance	$352 \Omega \pm 3 \Omega$
Isolation Resistance	$\leq 5000$ M $\Omega$ (100VDC)
Compensated Temperature	10 ~ + 40 °C
Operating Temperature	30 ~ + 70 °C
Excitation, Recommended Voltage	10 VDC
Maximum Excitation Voltage (U <sub>max</sub> )	15 VDC
Safe Overload	120 % FS
Ultimate Overload	200 % FS
Ingress Protection (EN60529)	IP 65
Element Material	Alloyed Steel
Cable	4x0.22mm <sup>2</sup>