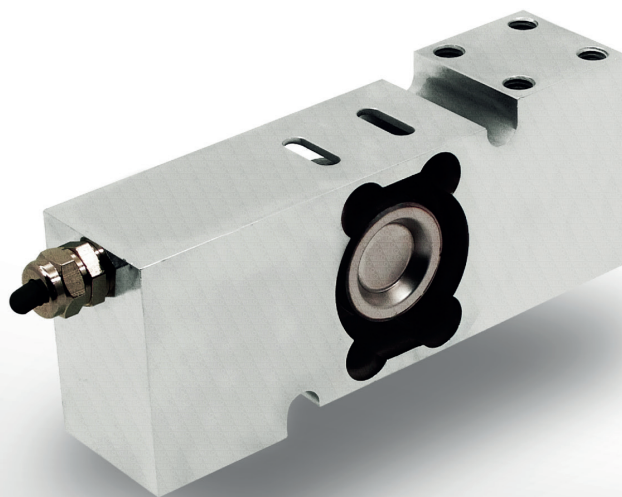


SPS Single Point Load Cell



A load cell with stainless steel housing and hermetic sealing, providing reliable precision in industrial applications.



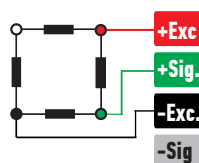
ABOUT PRODUCT

SPS Platform type load cell is produced in different capacities from 50 kg to 500 kg.

With its complete stainless steel body and hermetic sealing, it can be used in food, chemistry, etc. provides reliable precision in industrial applications.

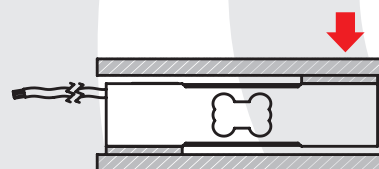
SPS can be used alone in suitable platform dimensions and has high performance.

CONNECTION DIAGRAM

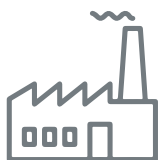


Red	Excitation+ (Input)
Green	Signal+ (Output)
Black	Excitation- (Input)
White	Signal- (Output)

WORK STYLE



APPLICATION AREAS



Machinery and Industry



Chemistry - Petrochemistry



Food

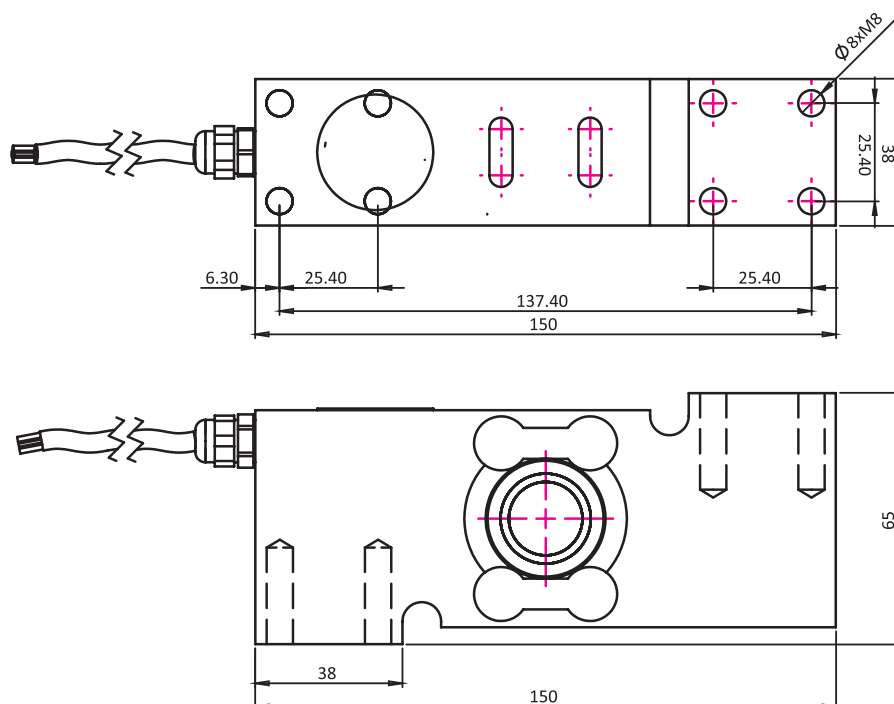


Agriculture and Livestock

FEATURES

- ✓ IP 68 protection class
- ✓ Plated nickel, steel alloyed
- ✓ Ease of installation

TECHNICAL DRAWING



TECHNICAL SPECIFICATIONS

Capacity	50, 100, 200, 300, 500 kg
Accuracy Class	C3
Minimum Load	0 kg
Maximum Intervals (nLC)	3000
Minimum Verification Interval	8000
Total Error	$\pm 0.02 \% \text{FS}$
Output Sensitivity (FS)	$2.00 \pm 0.01 \text{mV/V}$
Zero Balance	$\pm 1 \% \text{FS}$
Input Resistance	$380 \Omega \pm 10 \Omega$
Output Resistance	$350 \Omega \pm 2 \Omega$
Isolation Resistance	$\leq 5000 \text{ M}\Omega (100 \text{VDC})$
Compensated Temperature	$10 \sim + 40 \text{ }^{\circ}\text{C}$
Operating Temperature	$30 \sim + 70 \text{ }^{\circ}\text{C}$
Excitation, Recommended Voltage	10 VDC
Maximum Excitation Voltage (U _{max})	15 VDC
Safe Overload	120 % FS
Ultimate Overload	200 % FS
Ingress Protection (EN60529)	IP 68
Element Material	Stainless Steel
Cable	$4 \times 0.22 \text{mm}^2$