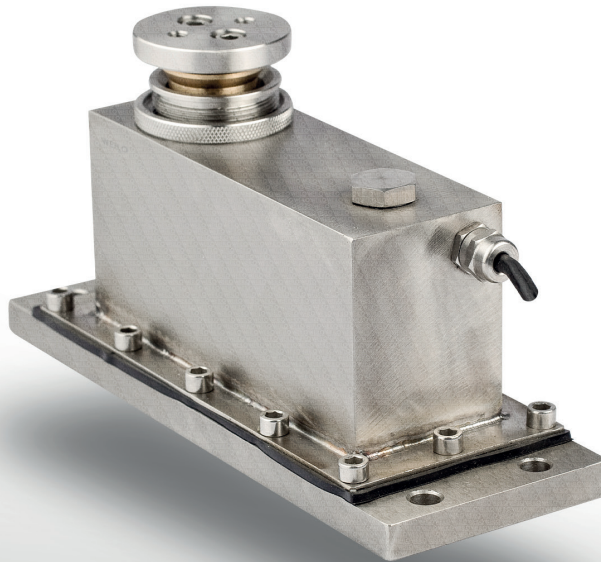


WYL Fluid Damped Load Cell



A high precision load cell model with viscous damping for dynamic weighing.



ABOUT PRODUCT

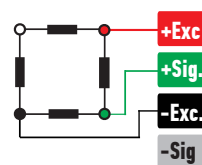
Oil-filled load cell, also known as viscous-damped load cell, is a high-precision load cell model called WYL.

It is particularly used in places where dynamic weighing similar to Checkweigher is performed.

Mounted in a liquid-filled box, WYL dampens vibrations through the liquid, allowing for more stable and faster weighing.

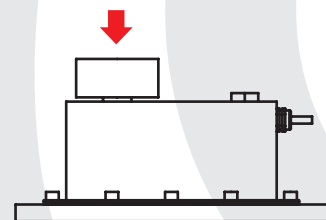
With its completely stainless steel body, it provides trouble-free use in hygienic environments.

CONNECTION DIAGRAM

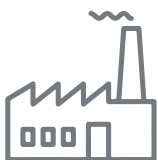


Red	Excitation+ (Input)
Green	Signal+ (Output)
Black	Excitation- (Input)
White	Signal- (Output)

WORK STYLE



APPLICATION AREAS



Machinery and Industry



Chemistry - Petrochemistry



Food

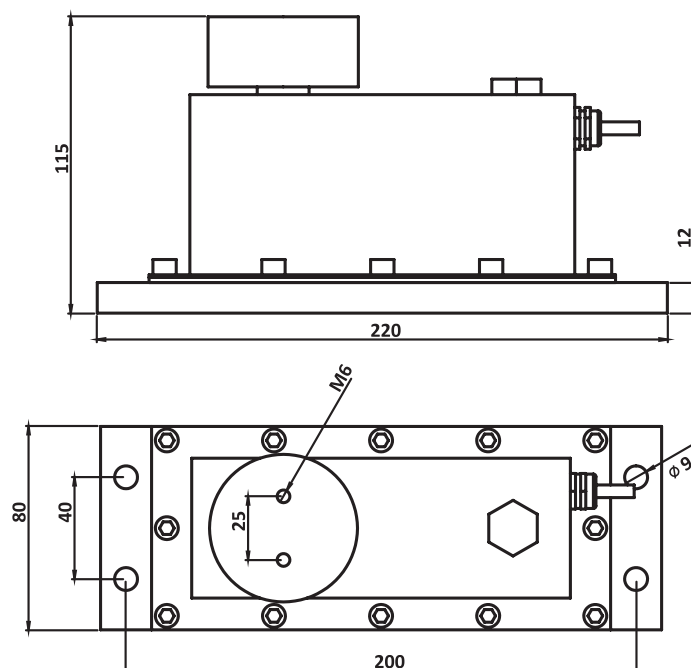


Agriculture And Livestock

FEATURES

- ✓ IP 66 protection class
- ✓ Plated nickel, steel alloyed
- ✓ Ease of installation

TECHNICAL DRAWING



TECHNICAL SPECIFICATIONS

Capacity	10, 15, 20, 35 Kg
Accuracy Class	C3
Minimum Load	0 kg
Maximum Intervals (nLC)	3000
Minimum Verification Interval	10000
Total Error	$\pm 0.05 \%FS$
Output Sensitivity (FS)	$1.00 \pm 0.05mV/V$
Zero Balance	$\pm 1 \%FS$
Input Resistance	$400 \Omega \pm 30 \Omega$
Output Resistance	$350 \Omega \pm 5 \Omega$
Isolation Resistance	$\leq 5000 M\Omega (100VDC)$
Compensated Temperature	$-10 \sim +40 ^\circ C$
Operating Temperature	$30 \sim +70 ^\circ C$
Excitation, Recommended Voltage	10 VDC
Maximum Excitation Voltage (U _{max})	15 VDC
Safe Overload	150 % FS
Ultimate Overload	300 % FS
Ingress Protection (EN60529)	IP 66
Element Material	Stainless Steel
Cable	4x0.22mm ²