

# LPW2

## Load Pin

A high-precision load cell with 4-point measurement.



### ABOUT PRODUCT

LPW2 is a pin type cylindrical high precision load cell that can measure from 4 points.

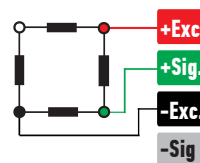
It is used in cranes and mobile weighing applications.

It can be produced in desired dimensions and capacities.

Standard mV/V signal output, 4-20mA and 0-10V Analog and RS485 Digital output options.

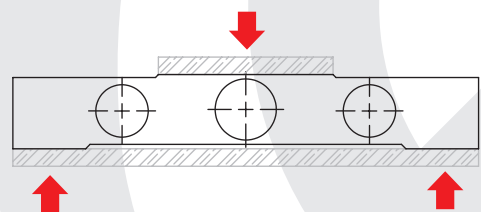
You can contact our sales engineers to get technical support regarding your weighing, automation and force test applications.

### CONNECTION DIAGRAM

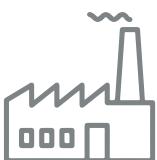


Red	Excitation+ (Input)
Green	Signal+ (Output)
Black	Excitation- (Input)
White	Signal- (Output)

### WORK STYLE



### APPLICATION AREAS



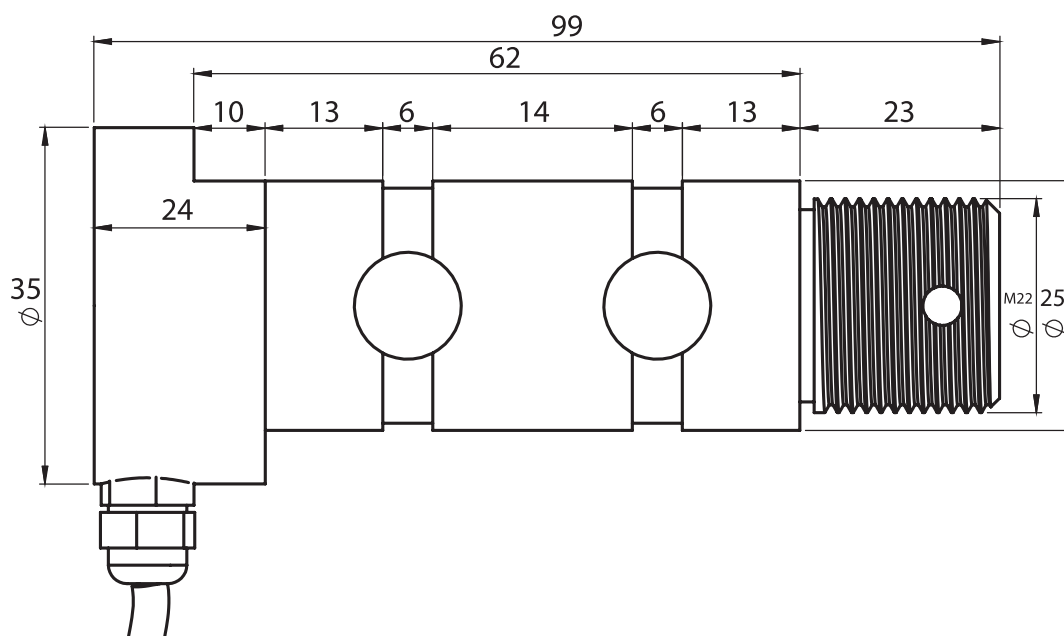
Machinery And Industry

### FEATURES

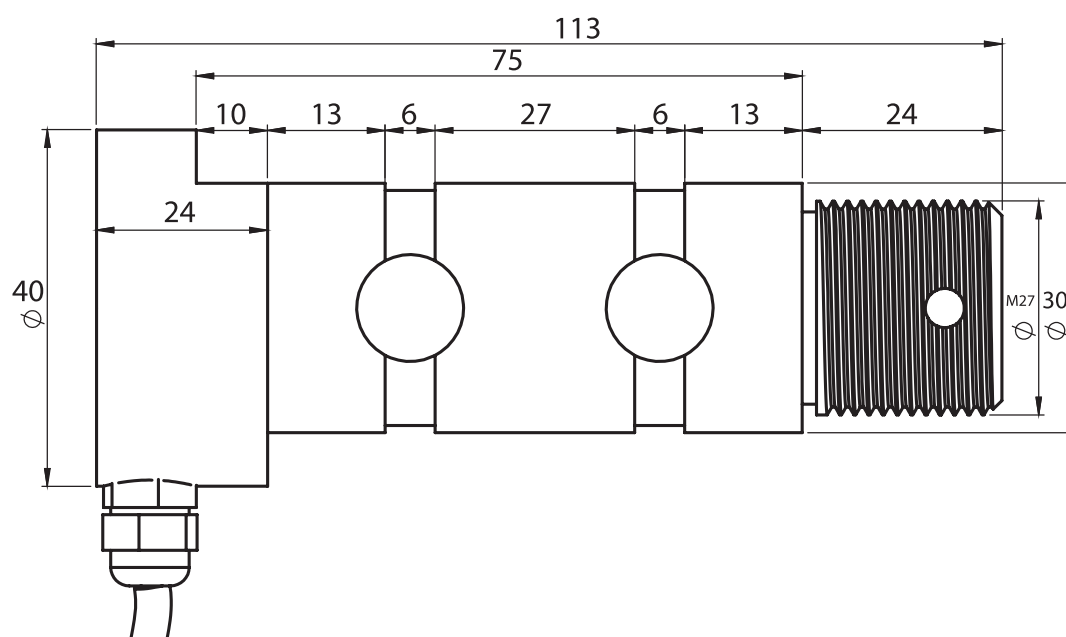
- ✓ IP 66 protection class
- ✓ Plated nickel, steel alloyed
- ✓ Ease of installation

## TECHNICAL DRAWING

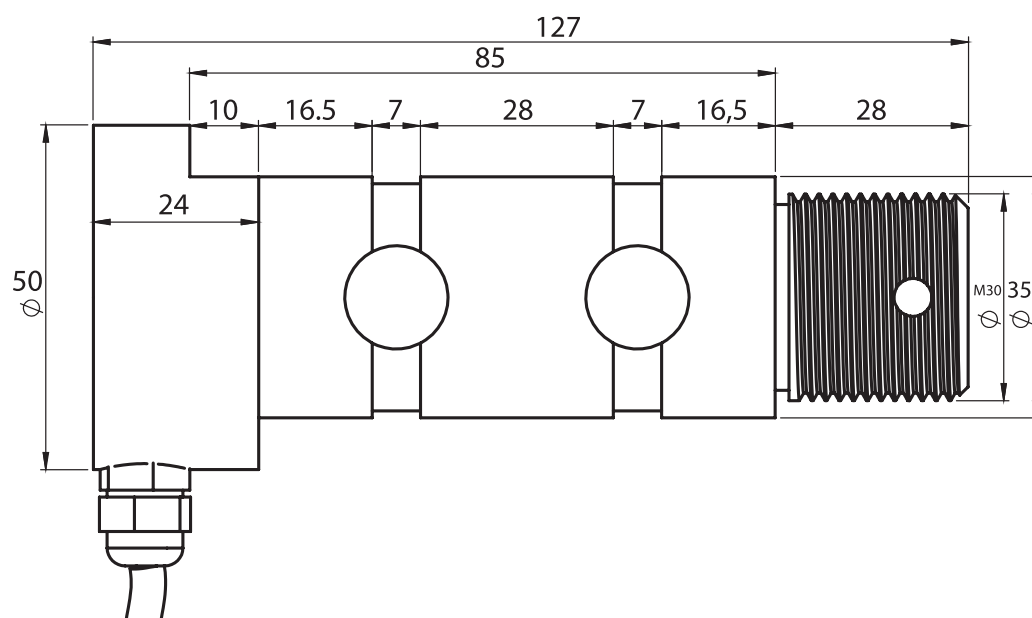
### 1 - 2 Tones



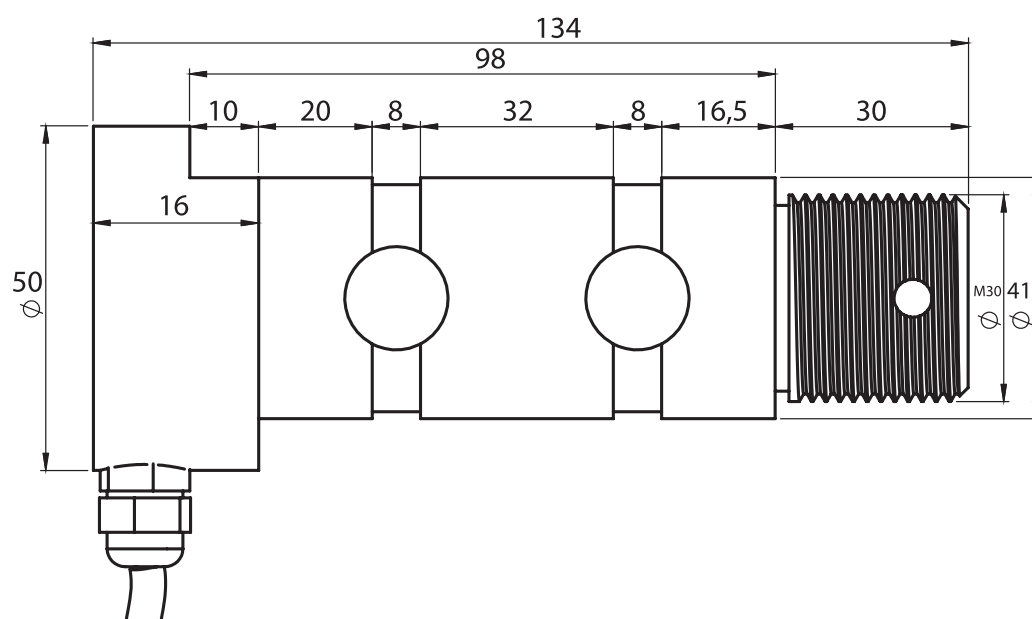
### 3 Tones

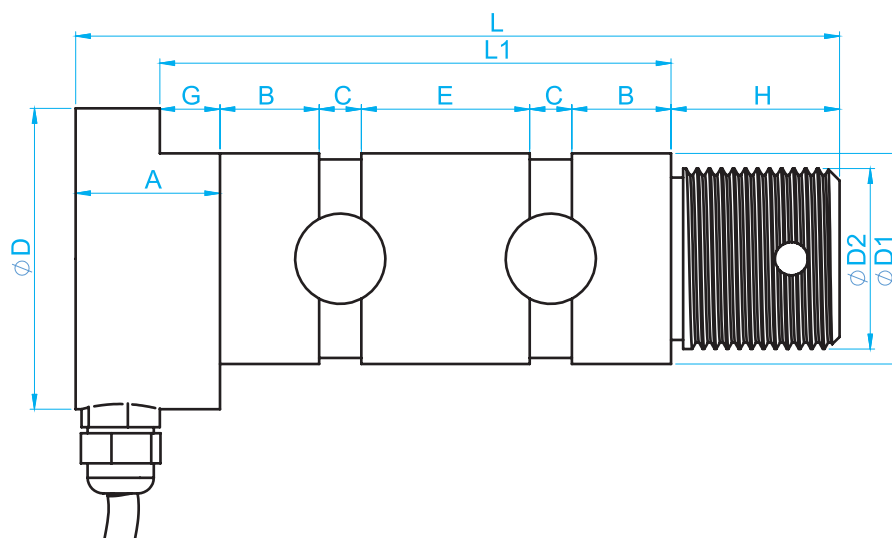


## 5 Ton



## 7.5 Ton





CAPACITY	L	L1	D	D1	D2	A	B	C	E	G	H
1 - 2 TONES	99	62	35	25	M 22	24	13	6	14	10	23
3 TONES	113	75	40	30	M 27	24	13	6	27	10	24
5 TONES	127	85	50	35	M 30	24	16.5	7	28	10	28
7.5 TONES	134	98	50	41	M 30	16	20	8	32	10	30

## TECHNICAL SPECIFICATIONS

Capacity	1 ~ 200 Tones
Accury Class	-
Minimum Load	0 kg
Maximum Intervals (nLC)	-
Minimum Verification Interval	-
Total Error	±0.5 %FS
Output Sensitivity (FS)	1.2 ± 0.2mV/V
Zero Balance	± 1 %FS
Input Resistance	370 Ω ± 20 Ω / 720 Ω ± 20 Ω
Output Resistance	352 Ω ± 3 Ω / 702 Ω ± 5 Ω
Isolation Resistance	≤ 5000 MΩ (100VDC)
Compansated Temperature	-10 ~ + 40 °C
Operating Temperature	-30 ~ + 70 °C
Excitation, Recommended Voltage	10 VDC
Maximum Excitation Voltage (Umax)	15 VDC
Safe Overload	150 % FS
Ultimate Overload	300 % FS
Ingress Protection (EN60529)	IP 66
Element Material	Alloyed Steel / Stainless Steel
Cable	4x0.22mm <sup>2</sup>