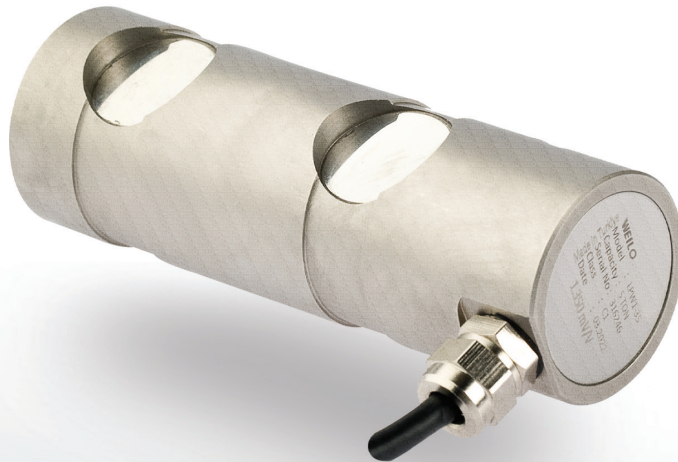


# LPW1

## Load Pin

A high-precision load cell with 4-point measurement.



### ABOUT PRODUCT

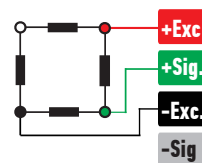
LPW1 is a pin type cylindrical high precision load cell that can measure from 4 points.

It is used in cranes and mobile weighing applications.

It can be produced in desired dimensions and capacities.

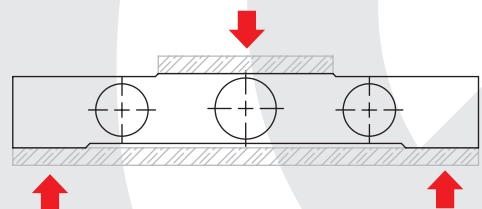
Standard mV/V signal output, 4-20mA and 0-10V Analog and RS485 Digital output options.

### CONNECTION DIAGRAM

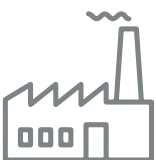


Red	Excitation+ (Input)
Green	Signal+ (Output)
Black	Excitation- (Input)
White	Signal- (Output)

### WORK STYLE



### APPLICATION AREAS



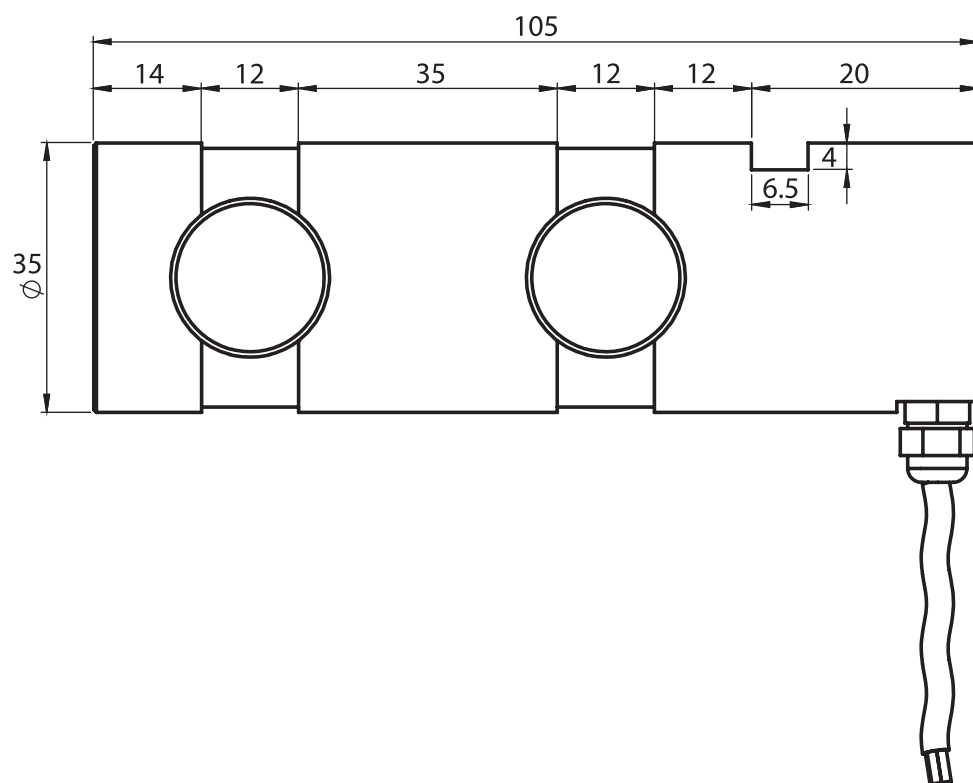
Machinery And Industry

### FEATURES

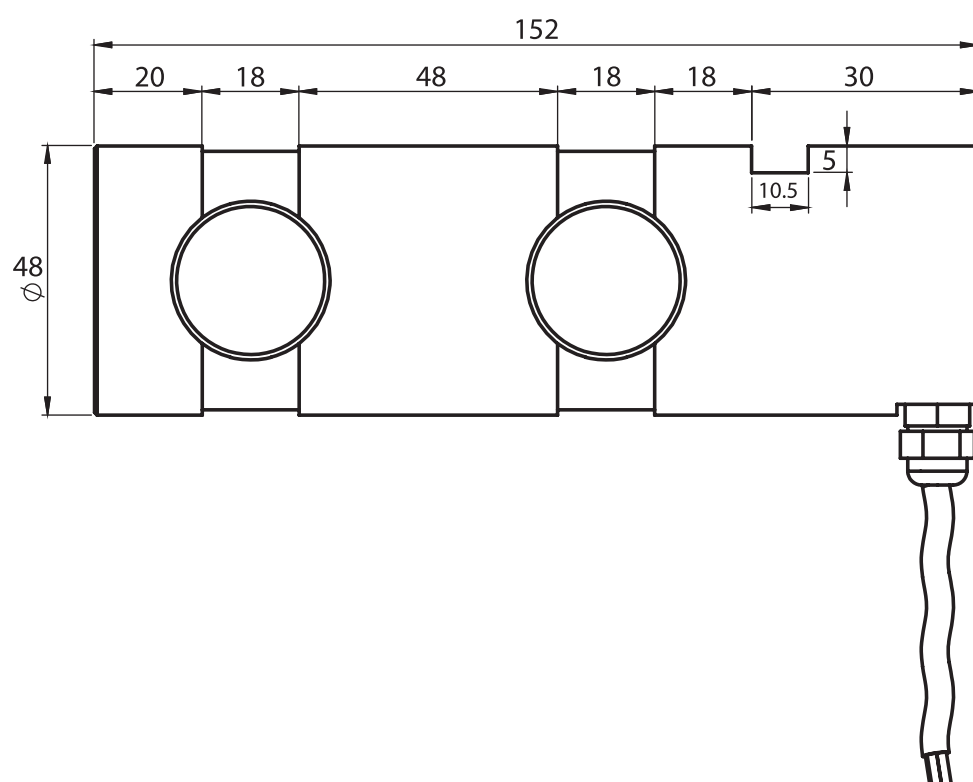
- ✓ IP 66 protection class
- ✓ Plated nickel, steel alloyed
- ✓ Ease of installation

## TECHNICAL DRAWING

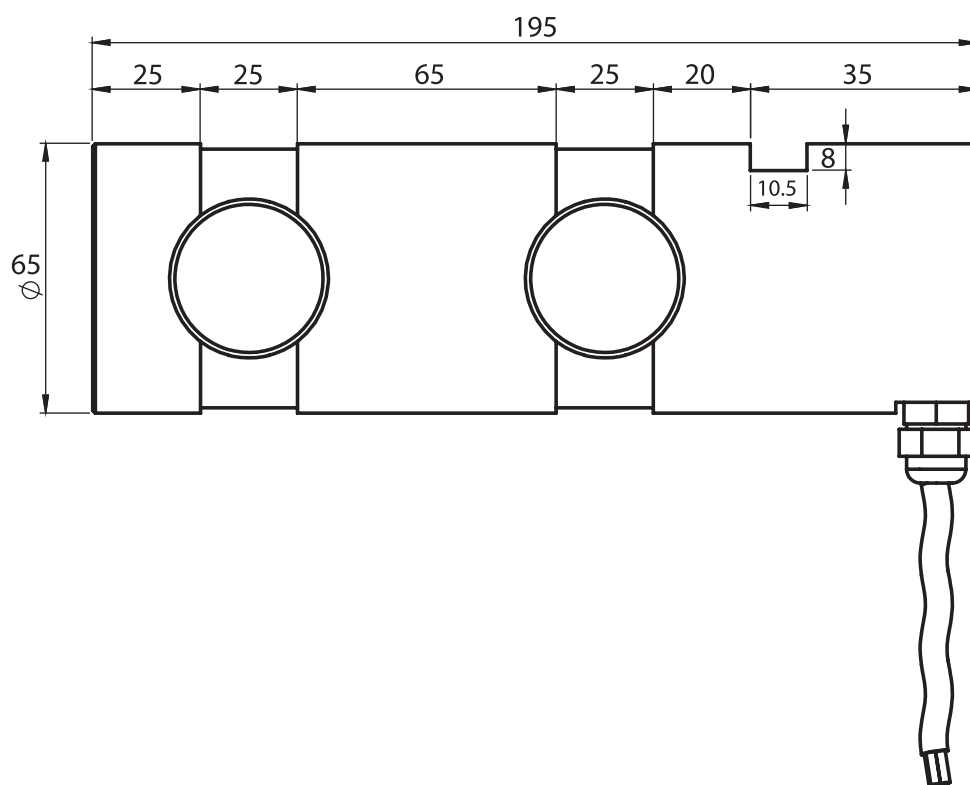
### 1 - 5 Tones



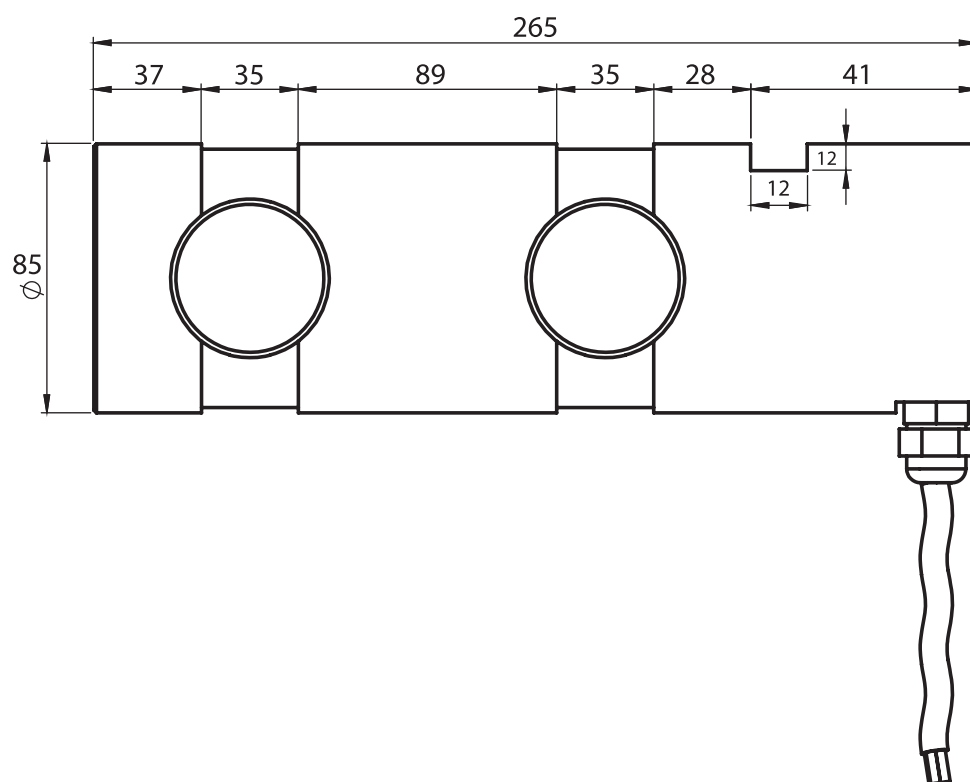
### 10 Tones

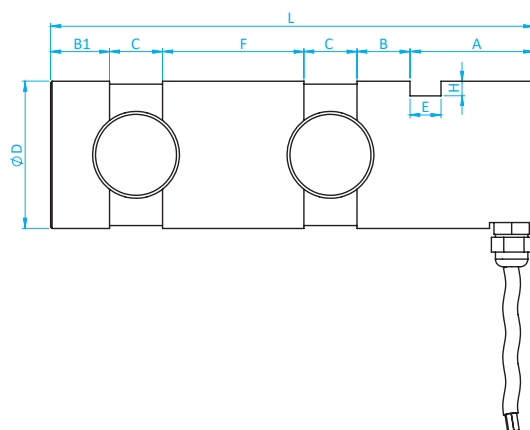


## 20 Tones



## 40 Tones





CAPACITY	L	A	B	C	F	B1	D	H	E
1 - 5 TONES	105	20	12	12	35	14	35	4	6.5
10 TONES	152	30	18	18	48	20	50	5	10.5
20 TONES	195	35	20	25	65	25	65	8	10.5
40 TONES	265	41	28	35	89	37	85	12	12

## TECHNICAL SPECIFICATIONS

Capacity	1 ~ 200
Accuracy Class	-
Minimum Load	0 kg
Maximum Intervals (nLC)	-
Minimum Verification Interval	-
Total Error	$\pm 0.5 \%FS$
Output Sensitivity (FS)	$1.2 \pm 0.2mV/V$
Zero Balance	$\pm 1 \%FS$
Input Resistance	$370 \Omega \pm 20 \Omega / 720 \Omega \pm 20 \Omega$
Output Resistance	$352 \Omega \pm 3 \Omega / 702 \Omega \pm 5 \Omega$
Isolation Resistance	$\leq 5000 M\Omega (100VDC)$
Compensated Temperature	$-10 \sim +40 ^\circ C$
Operating Temperature	$-30 \sim +70 ^\circ C$
Excitation, Recommended Voltage	10 VDC
Maximum Excitation Voltage (Umax)	15 VDC
Safe Overload	150 % FS
Ultimate Overload	300 % FS
Ingress Protection (EN60529)	IP 66
Element Material	Alloyed Steel / Stainless Steel
Cable	$4 \times 0.22mm^2$