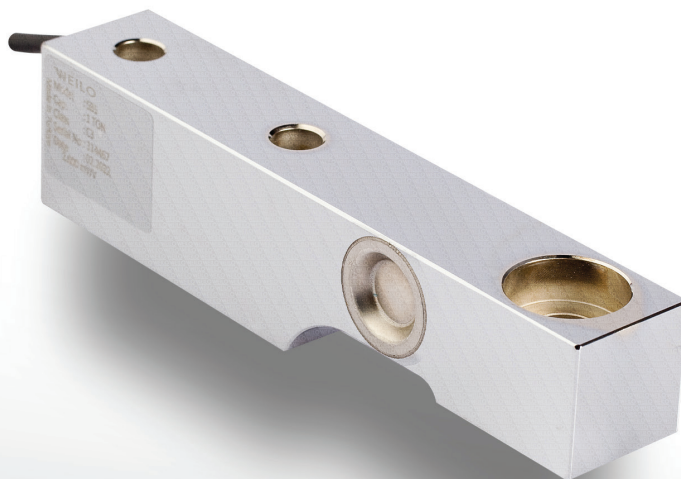


SBS Shear Beam Load Cell



A nickel-plated steel alloy load cell whose electronic circuit is sealed by laser welding.



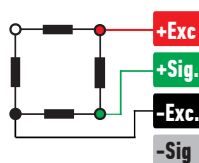
ABOUT PRODUCT

SBS model load cells are produced in capacities ranging from 1 to 20 tons using nickel-plated steel alloy.

The electronic circuit is sealed with laser welding and provides high-level durability against dust and liquid contact with an IP 68 protection class.

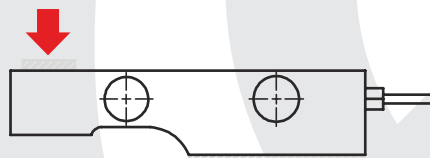
Thanks to its nickel plating, it can withstand corrosion and rust for many years.

CONNECTION DIAGRAM

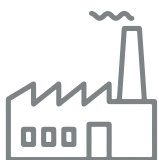


Red	Excitation+ (Input)
Green	Signal+ (Output)
Black	Excitation- (Input)
White	Signal- (Output)

WORK STYLE



APPLICATION AREAS



Machinery and Industry



Chemistry - Petrochemistry



Food



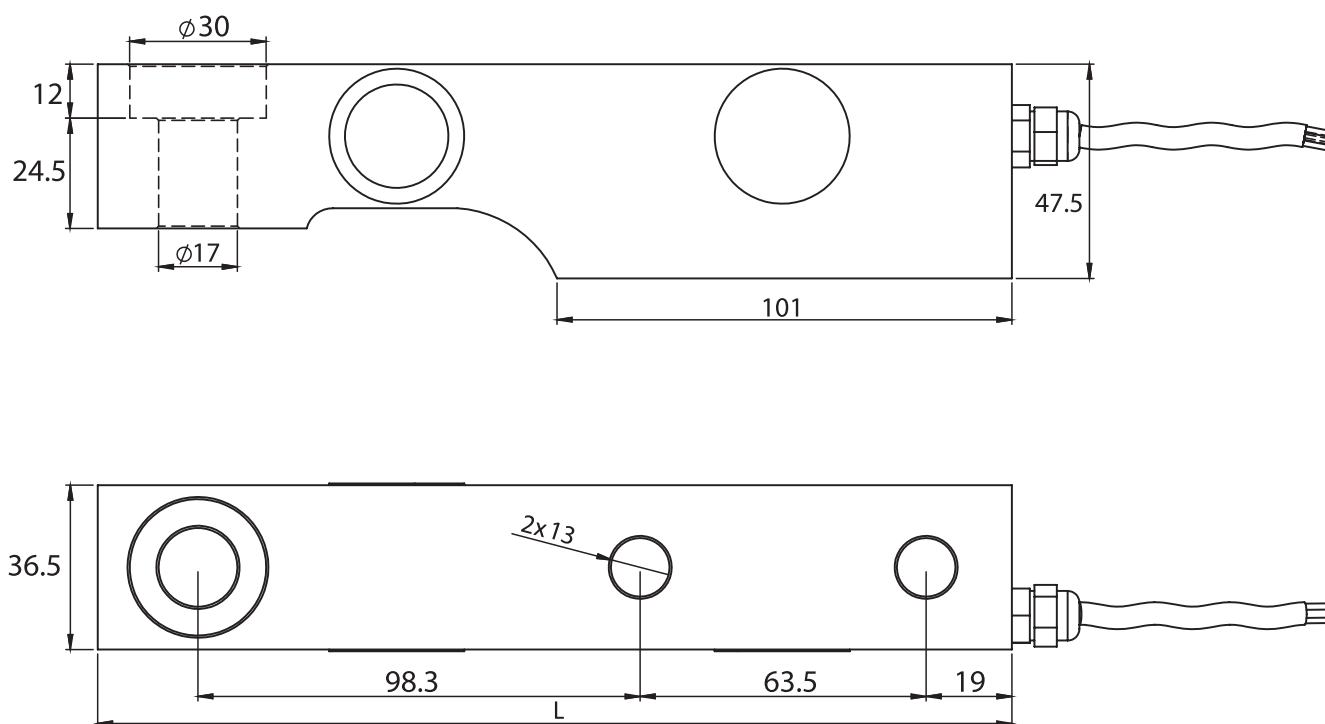
Concrete Batching Plants And Construction

FEATURES

- ✓ IP 68 protection class
- ✓ Plated nickel, steel alloyed
- ✓ Ease of installation

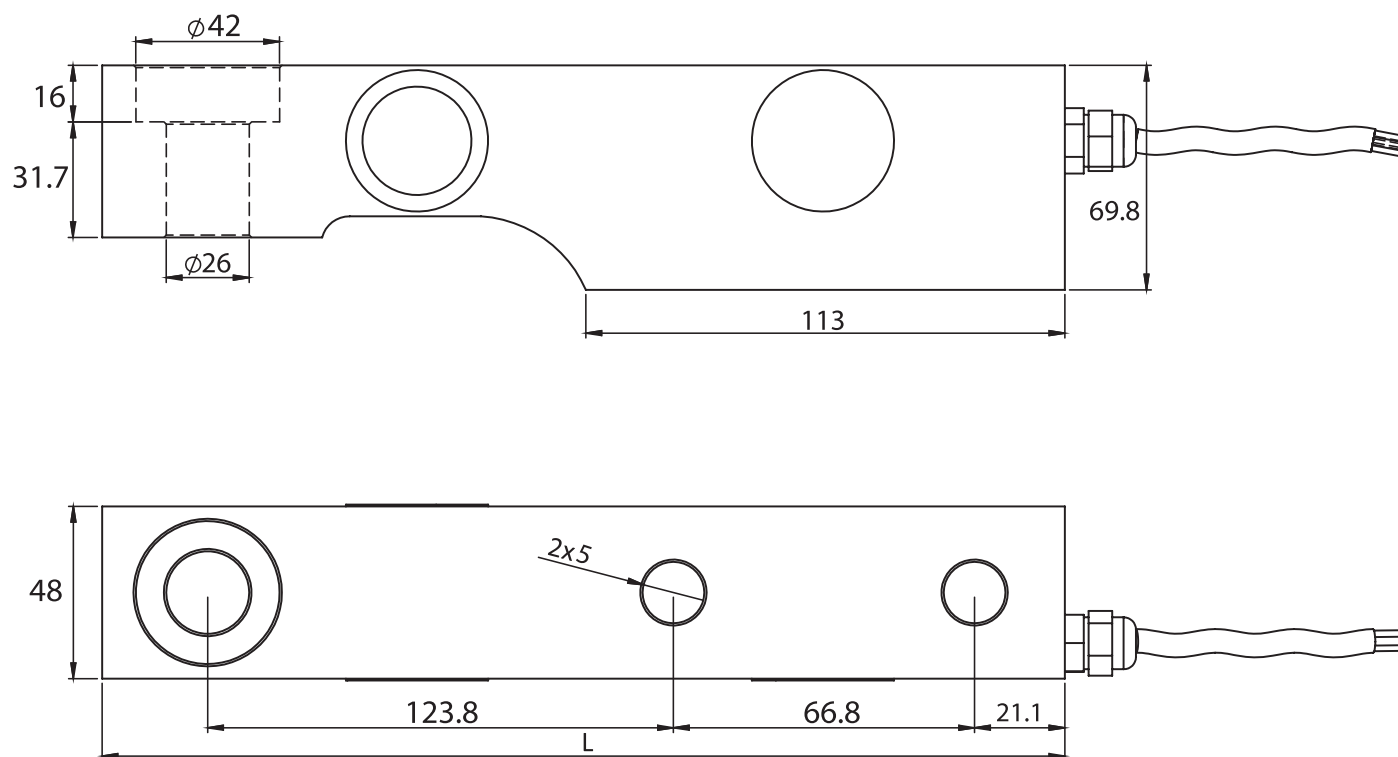
TECHNICAL DRAWING

1 - 2 Tones



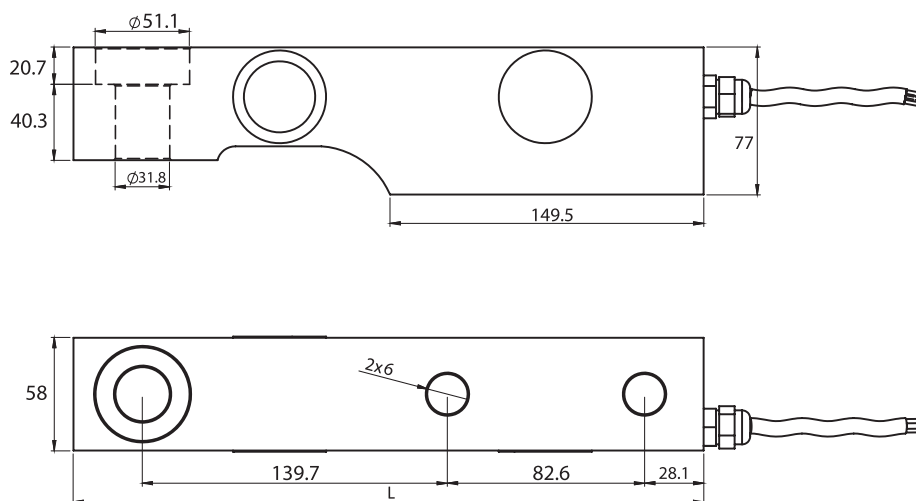
SBS Shear Beam Load Cell

5 Tones



SBS Shear Beam Load Cell

10 Tones



CAPACITY	L	L1	L2	L3	L4	W	H	H1	H2	D	D1	D2
1 - 2 TONES	203.2	19	63.5	98.3	101	36.5	47.5	24.5	12	30	17	13
5 TONES	236	21.1	66.8	123.8	113	48	69.8	31.7	16	42	26	22
10 TONES	282	28.1	82.6	139.7	149.5	58	77	40.3	20.7	51.1	31.8	27

TECHNICAL SPECIFICATIONS

Capacity	1, 2, 5, 10 Tones
Accruy Class	C3
Minimum Load	0 kg
Maximum Intervals (nLC)	3000
Minimum Verification Interval	10000
Total Error	±0.02 %FS
Output Sensitivity (FS)	2.00 ± 0.005mV/V
Zero Balance	± 1 %FS
Input Resistance	380 Ω ± 20 Ω
Output Resistance	350 Ω ± 3 Ω
Isolation Resistance	≤ 5000 MΩ (100VDC)
Compansated Temperature	-10 ~ + 40 °C
Operating Temperature	-30 ~ + 70 °C
Excitation, Recommended Voltage	10 VDC
Maximum Excitation Voltage (Umax)	15 VDC
Safe Overload	150 % FS
Ultimate Overload	300 % FS
Ingress Protection (EN60529)	IP 68
Element Material	Alloyed Steel / Stainless Steel
Cable	4x022mm ²