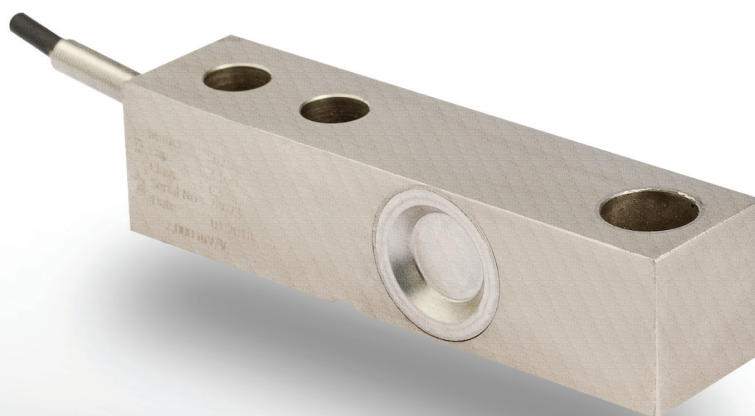


SB2 Shear Beam Load Cell



A stainless steel load cell that can operate for many years in industrial environments.



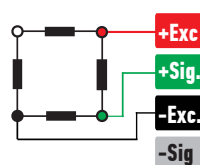
ABOUT PRODUCT

The SB2 model load cells are produced from stainless steel with capacities ranging from 0.1 to 5 tons.

Their stainless steel structure makes them resistant to rust and corrosion, allowing them to work for many years in industrial environments.

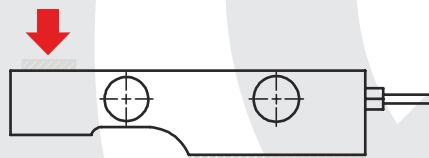
The SB2 model load cells provide high precision measurement, particularly ensuring production accuracy in food production processes.

CONNECTION DIAGRAM

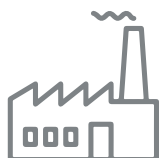


Red	Excitation+ (Input)
Green	Signal+ (Output)
Black	Excitation- (Input)
White	Signal- (Output)

WORK STYLE



APPLICATION AREAS



Machinery and Industry



Chemistry - Petrochemistry



Food



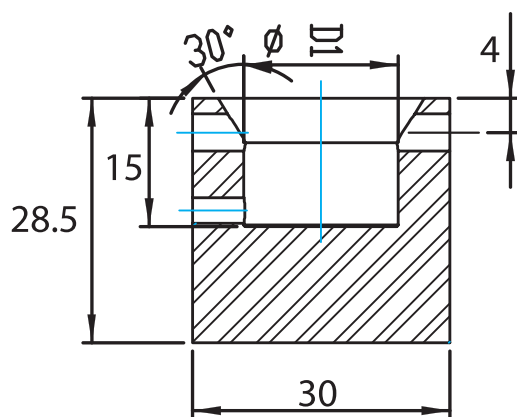
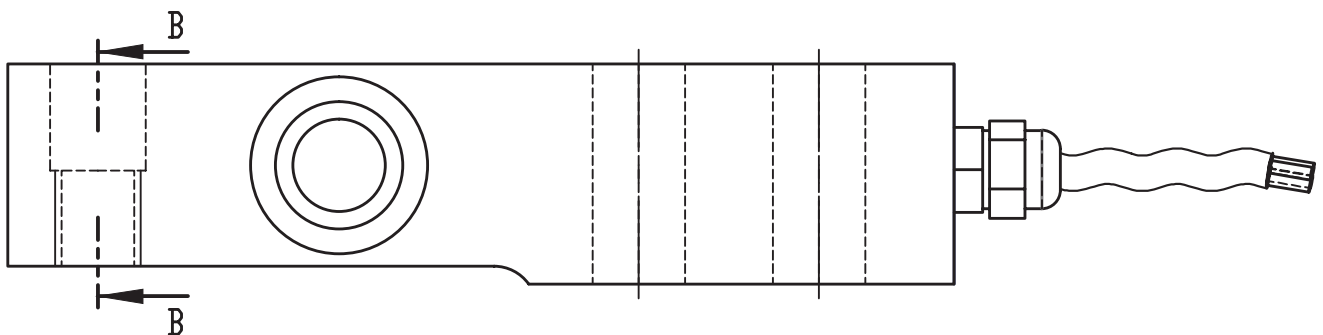
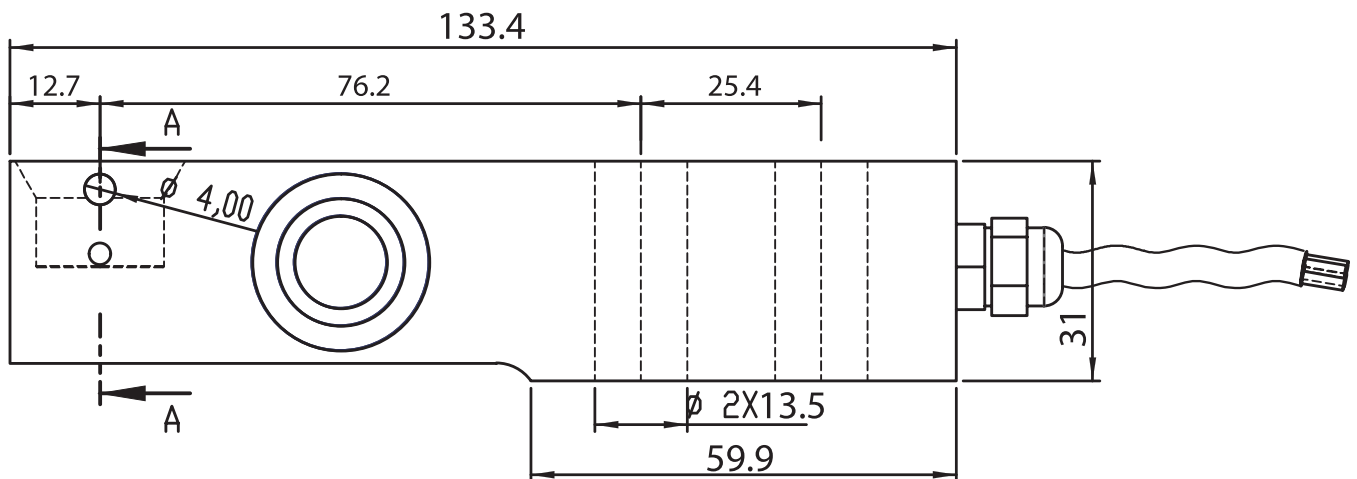
Concrete Batching Plants And Construction

FEATURES

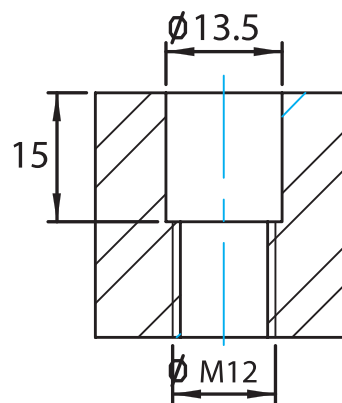
- ✓ IP 68 protection class
- ✓ Plated nickel, steel alloyed
- ✓ Ease of installation

TECHNICAL DRAWING

100 - 500 Kg



KESIT A-A
SB14-HH

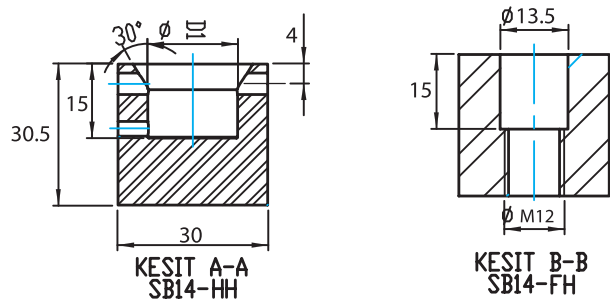
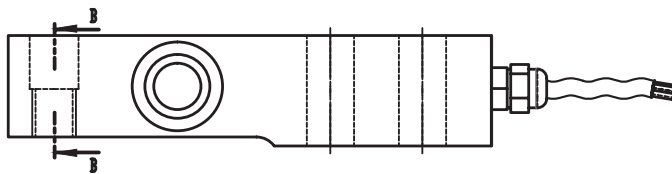
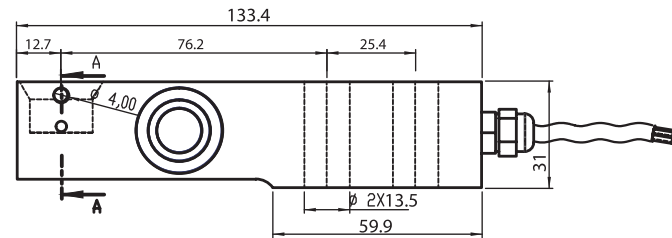


KESIT B-B
SB14-FH

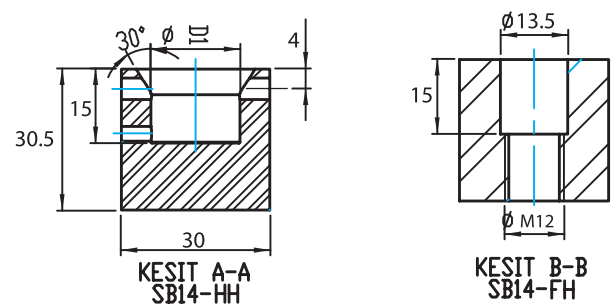
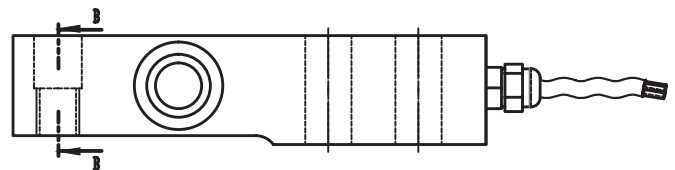
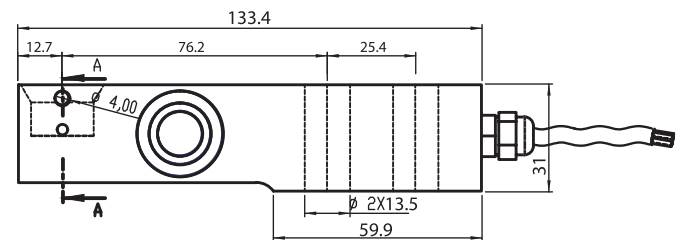
SB2 Shear Beam Load Cell



1 Tones

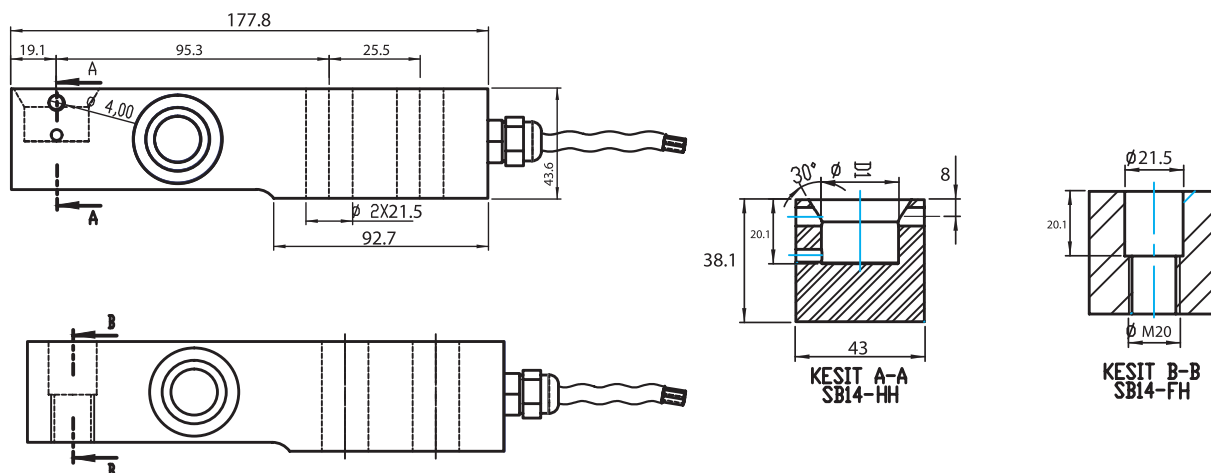


2 Tones



SB2 Shear Beam Load Cell

5 Tones



CAPACITY	L1	L2	L3	L4	L5	H1	H2	H3	H4	C1	W	D	D1	D2	D3
100 - 500 Kg	133.4	12.7	76.2	25.4	59.9	31	28.8	15	15	4	30	13	18	13.5	M12
1 TONES	133.4	12.7	76.2	25.4	59.9	31	30.5	15	15	4	30	13	18	13.5	M12
2 TONES	133.4	12.7	76.2	25.4	59.9	31	30.5	15	15	4	30	13	18	13.5	M12
5 TONES	177.8	19.1	95.3	38.1	92.7	43.6	38.1	20.5	20.1	8	43	21	25	21.5	M12

TECHNICAL SPECIFICATIONS

Capacity	0.1, 0.2, 0.5, 1, 2, 5 Ton
Accury Class	C3
Minimum Load	0 kg
Maximum Intervals (nLC)	3000
Minimum Verification Interval	12000
Total Error	±0.020 %FS
Output Sensitivity (FS)	2.00 ± 0.005mV/V
Zero Balance	± 1 %FS
Input Resistance	380 Ω ± 20 Ω
Output Resistance	350 Ω ± 3 Ω
Isolation Resistance	≤ 5000 MΩ (100VDC)
Compansated Temperature	-10 ~ + 40 °C
Operating Temperature	-30 ~ + 70 °C
Excitation, Recommended Voltage	10 VDC
Maximum Excitation Voltage (Umax)	15 VDC
Safe Overload	150 % FS
Ultimate Overload	300 % FS
Ingress Protection (EN60529)	IP 68
Element Material	Alloyed Steel / Stainless Steel
Cable	4x0.22mm ²