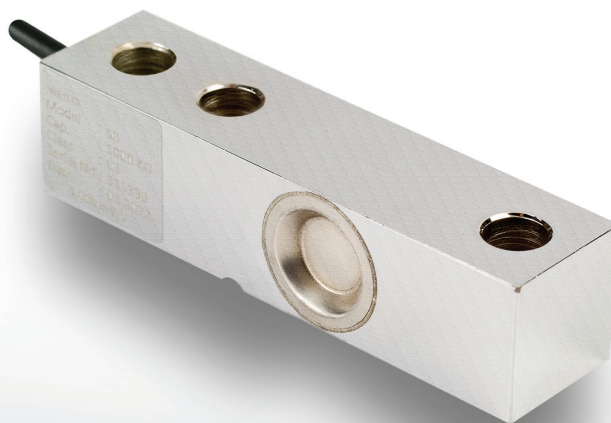


SB Shear Beam Load Cell



A load cell made of nickel-plated steel alloy used in equipment such as animal scales, milk tanks, etc.



ABOUT PRODUCT

SB model load cells are produced in nickel-plated steel alloy with capacities ranging from 100 kg to 20 tons.

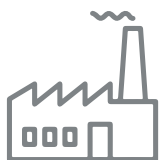
They have the OIML R60 certificate in class C3, which confirms their measurement and accuracy.

They are used in many equipment such as animal weighing scales and milk tanks.

The electronic circuit is sealed with laser welding and provides high-level durability against dust and liquid contact with an IP 68 rating.

Its nickel coating provides long-lasting resistance against rust and corrosion.

APPLICATION AREAS



Machinery And Industry



Chemistry - Petrochemistry

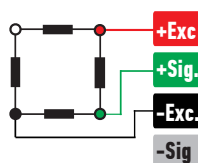


Agriculture And Livestock



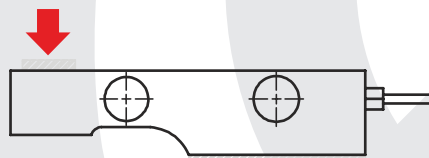
Food

CONNECTION DIAGRAM



Red	Excitation+ (Input)
Green	Signal+ (Output)
Black	Excitation- (Input)
White	Signal- (Output)

WORK STYLE

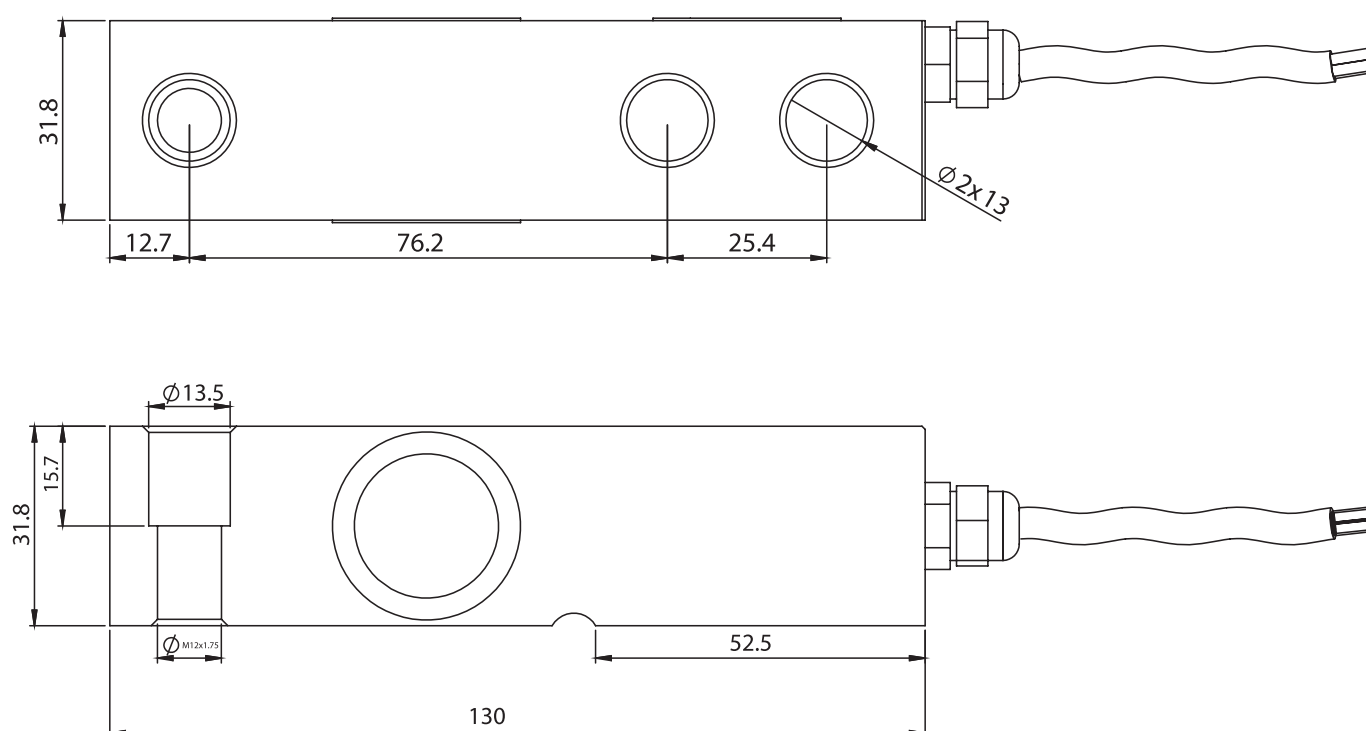


FEATURES

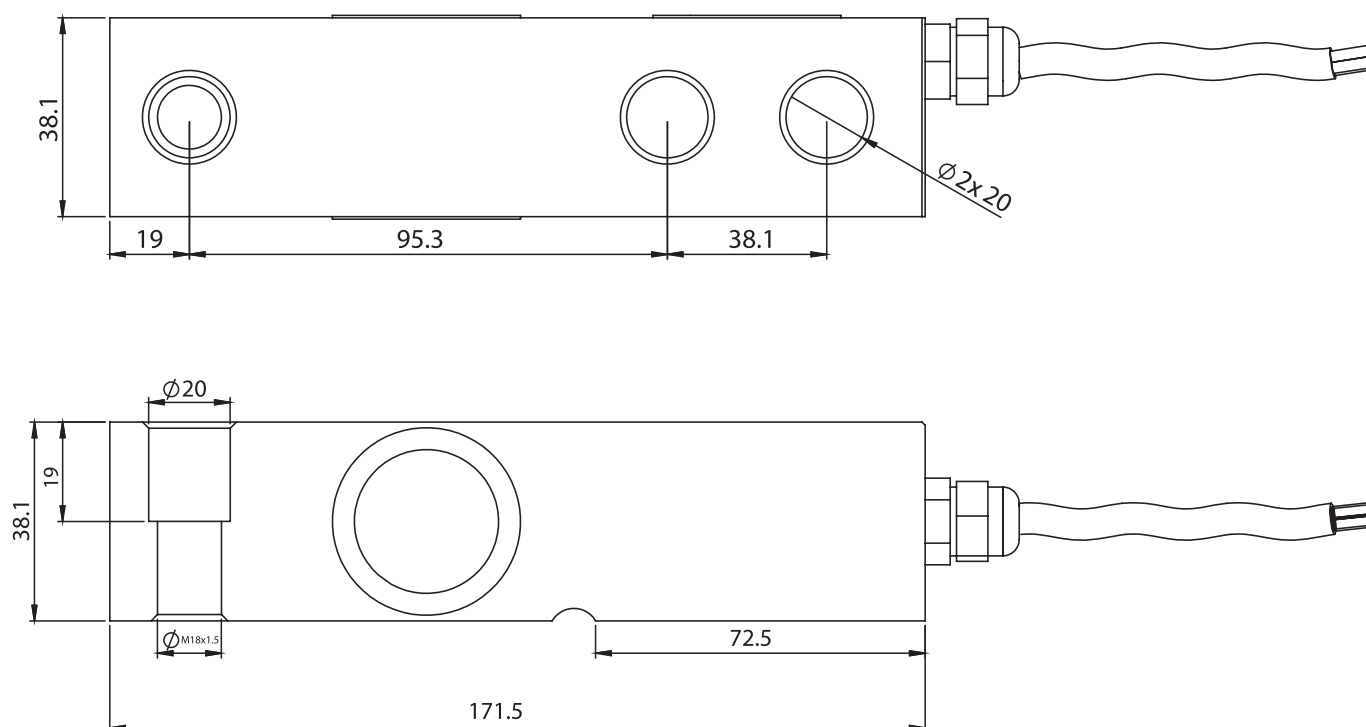
- ✓ IP 68 protection class
- ✓ Plated nickel, steel alloyed
- ✓ Ease of installation

TECHNICAL DRAWING

0.5 - 1 - 2 Tones

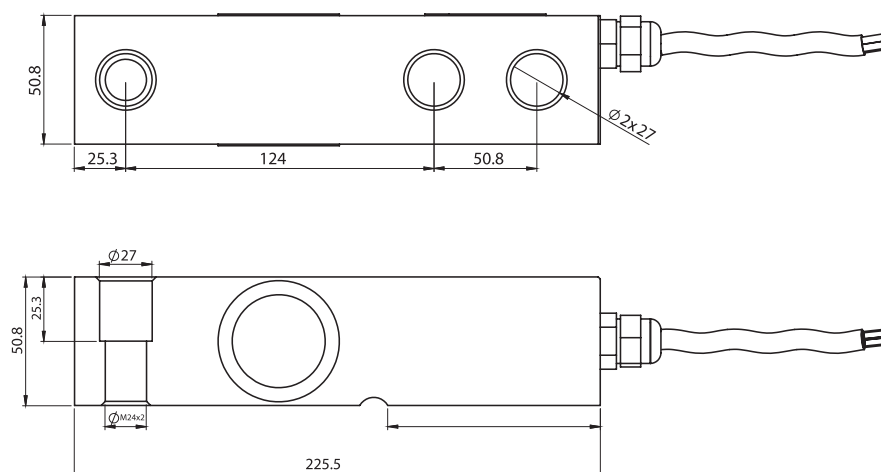


3 - 5 Tones



SB Shear Beam Load Cell

10 Tones



CAPACITY	L	L1	L2	L3	L4	H/B	H1	D1	D2	D3
0.5 - 1 - 2 TONES	130	12.7	76.2	25.4	52.5	31.8	15.7	M12x1.75	Ø13.5	Ø13
3 - 5 TONES	171.5	19	95.3	38.1	72.5	38.1	19	M18x1.5	Ø20	Ø20
10 TONES	225.5	25.3	124	50.8	102	50.8	25.4	M24x2	Ø27	Ø27

TECHNICAL SPECIFICATIONS

Capacity	100, 150, 200, 500, 750 kg 1, 2, 3, 5, 10, 15, 20 Tones
Accruy Class	C3
Minimum Load	0 kg
Maximum Intervals (nLC)	3000
Minimum Verification Interval	10000 (Y=E _{max} / V _{min})
Total Error	±0.020 %FS
Output Sensitivity (FS)	2.00 ± 0.005mV / V 3.00 ± 0.005mV/V
Zero Balance	± 1 %FS
Input Resistance	400 Ω ± 20 Ω
Output Resistance	352 Ω ± 3 Ω
Isolation Resistance	≤ 5000 MΩ (100VDC)
Compansated Temperature	-10 ~ + 40 °C
Operating Temperature	-30 ~ + 70 °C
Excitation, Recommended Voltage	10 VDC
Maximum Excitation Voltage (U _{max})	15 VDC
Safe Overload	150 % FS
Ultimate Overload	300 % FS
Ingress Protection (EN60529)	IP 68
Element Material	Alloyed Steel / Stainless Steel
Cable	4x0.22mm ²