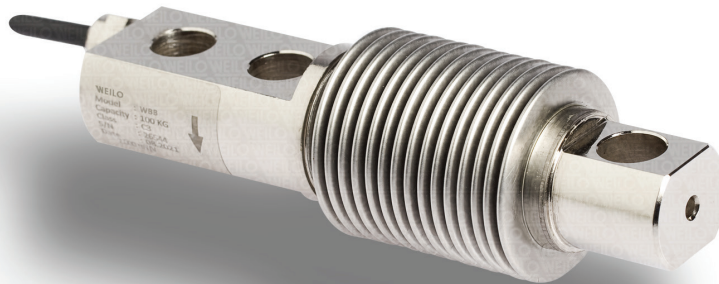


# WBB Bending Beam Load Cell



*Load cell that helps to dampen the vibration generated by the mechanism.*



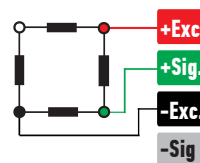
## ABOUT PRODUCT

The WBB model load cell is produced in nickel-plated steel alloy or stainless steel with capacities ranging from 20 to 500 kg.

The aluminum bellows on it helps to dampen the vibration created by the mechanism it is attached to, providing precise and accurate measurement.

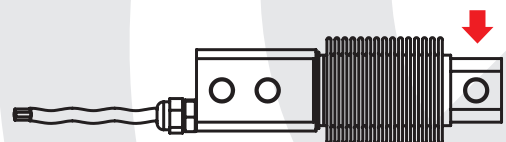
The WBB model load cell can be produced with 0-10 V, 4-20 mA analog, and Modbus-RTU digital outputs.

## CONNECTION DIAGRAM

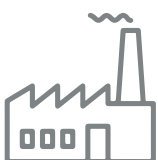


Red	Excitation+ (Input)
Green	Signal+ (Output)
Black	Excitation- (Input)
White	Signal- (Output)

## WORK STYLE



## APPLICATION AREAS



Machinery And Industry



Agriculture And Livestock



Chemistry - Petrochemistry



Textile

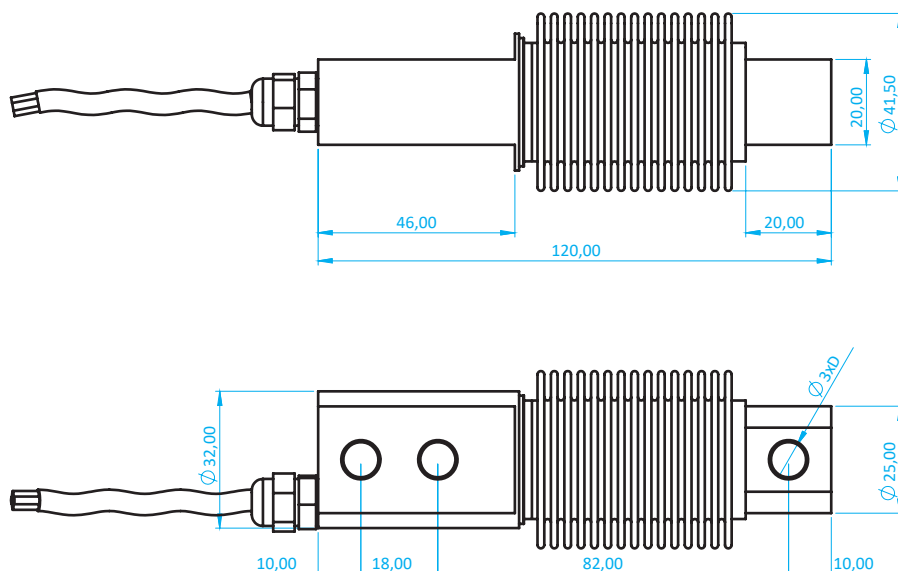


Logistics and Transport

## FEATURES

- ✓ IP 68 protection class
- ✓ Plated nickel, steel alloyed
- ✓ Ease of installation

## TECHNICAL DRAWING



CAPACITY	D
20 - 50 - 100 - 200 Kg	Ø8.2
300 - 500 Kg	Ø10.2

## TECHNICAL SPECIFICATIONS

Capacity	20, 50, 100, 200, 300, 500 Kg
Accury Class	C3
Minimum Load	0 kg
Maximum Intervals (nLC)	3000
Minimum Verification Interval	15000
Total Error	±0.022 %FS
Output Sensitivity (FS)	2.00 ± 0.005mV/V
Zero Balance	± 1 %FS
Input Resistance	400 Ω ± 20 Ω
Output Resistance	350 Ω ± 3 Ω
Isolation Resistance	≤ 5000 MΩ (100VDC)
Compansated Temperature	-10 ~ + 40 °C
Operating Temperature	-30 ~ + 70 °C
Excitation, Recommended Voltage	10 VDC
Maximum Excitation Voltage (Umax)	15 VDC
Safe Overload	150 % FS
Ultimate Overload	300 % FS
Ingress Protection (EN60529)	IP 68
Element Material	Alloyed Steel / Stainless Steel
Cable	4x022mm <sup>2</sup>