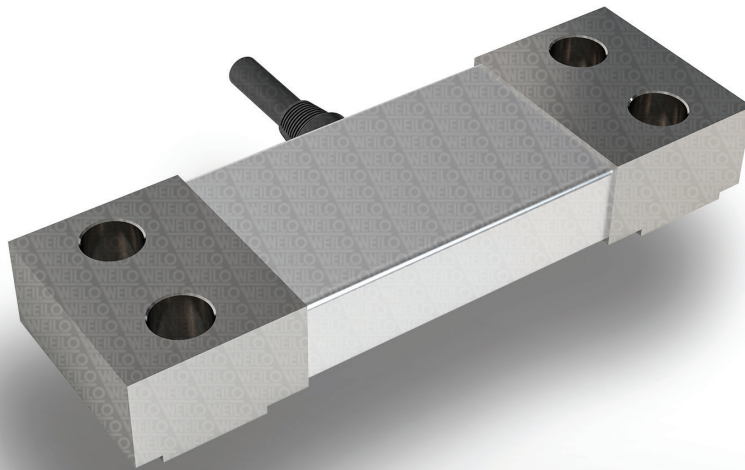


SM Strain Sensor

A strain sensor which allows easy measurement of the tension of the assembled structure.



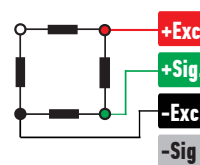
ABOUT PRODUCT

The SM model strain sensor provides the opportunity to easily measure the tension of the structure on which it is mounted.

The general purpose of use is to provide dynamic weight measurement of the chassis in the vehicle by mounting it on vehicle chassis.

In the same context, scaffolding, etc. It allows to measure the strain of any type of structure by being mounted on a structure.

CONNECTION DIAGRAM

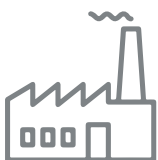


Red	Excitation+ (Input)
Green	Signal+ (Output)
Black	Excitation- (Input)
White	Signal- (Output)

FEATURES

- ✓ IP 66 protection class
- ✓ Stainless Steel
- ✓ Ease of installation

APPLICATION AREAS

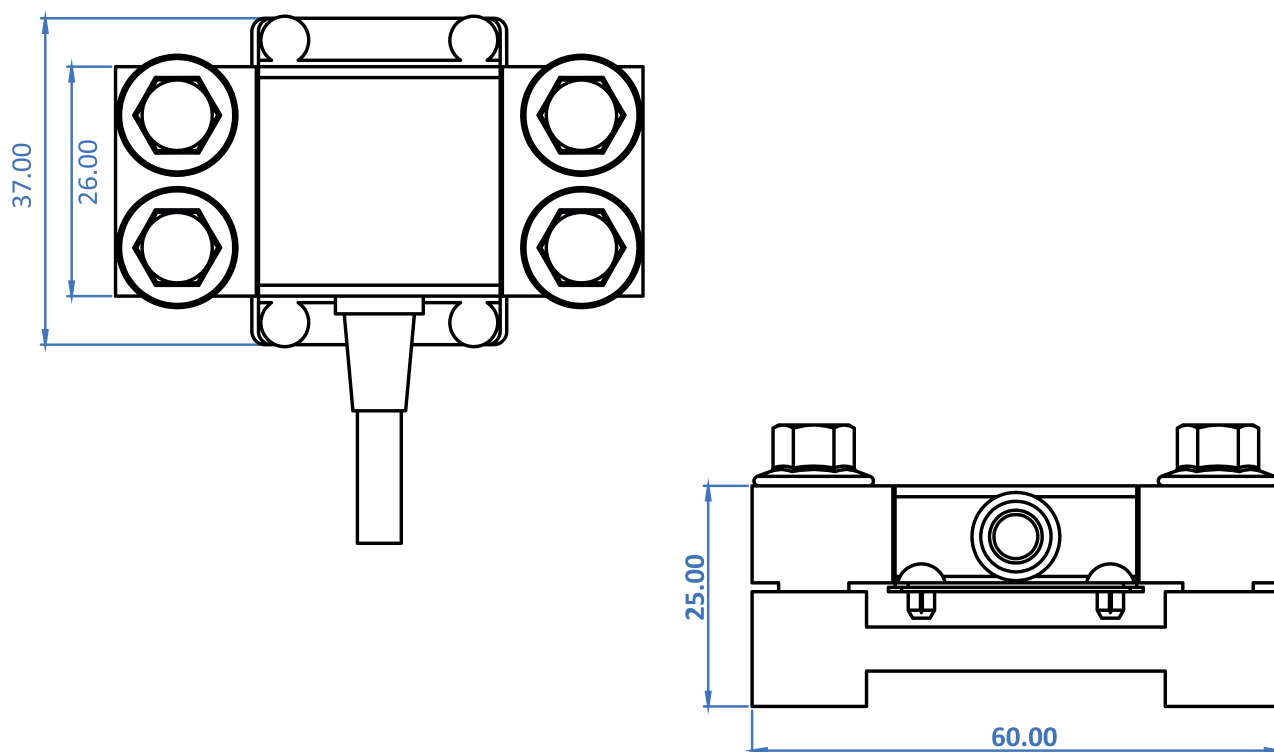


Machinery and
Industry



Logistics and
Transport

TECHNICAL DRAWING



TECHNICAL SPECIFICATIONS

Capacity	200 Kg
Output Sevsivity (FS)	$1.00 \pm 0.1\text{mV/V}$
Total Error	$\pm 1\% \text{FS}$
Zero Balance	$\pm 2\% \text{FS}$
Input Resistance	$350\ \Omega \pm 10\ \Omega$
Output Resistance	$352\ \Omega \pm 3\ \Omega$
Isolation Resistance	$\leq 5000\ \text{M}\Omega\ (100\text{VDC})$
Compansated Temperature	$-10 \sim +40\ ^\circ\text{C}$
Operating Temperature	$30 \sim +70\ ^\circ\text{C}$
Excitation, Recommended Voltage	10 VDC
Maximum Excitation Voltage (Umax)	15 VDC
Safe Overload	150 % FS
Ultimate Overload	300 % FS
Ingress Protection (EN60529)	IP 66
Element Material	Alloyed Steel / Stainless Steel
Cable	$4 \times 0.22\text{mm}^2$