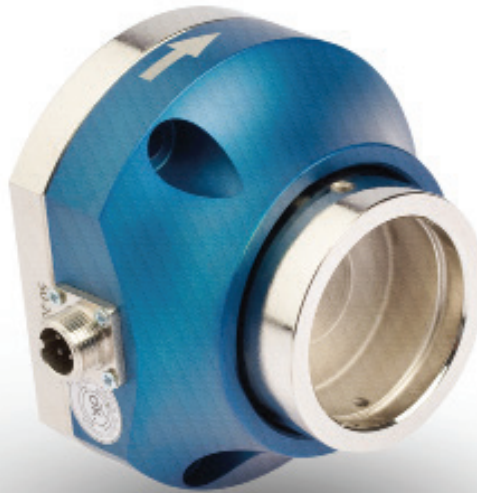


WTM Strain Control Load Cell

Tension measuring load cell made of nickel plated steel alloyed or stainless steel.



ABOUT PRODUCT

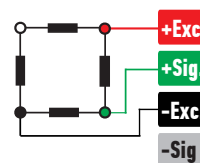
WTM model load cell is produced from nickel-plated steel alloyed or stainless steel.

The WTM model load cell is mainly used in textile and printing machines to measure the tension of yarn or printing paper.

It offers easy electrical installation with the 4-pin connector on it.

Packaged with cable and connectors.

CONNECTION DIAGRAM



Red	Excitation+ (Input)
Green	Signal+ (Output)
Black	Excitation- (Input)
White	Signal- (Output)

FEATURES

- ✓ IP 66 protection class
- ✓ Stainless Steel / Alloy Steel
- ✓ Ease of installation

APPLICATION AREAS



Machinery and Industry

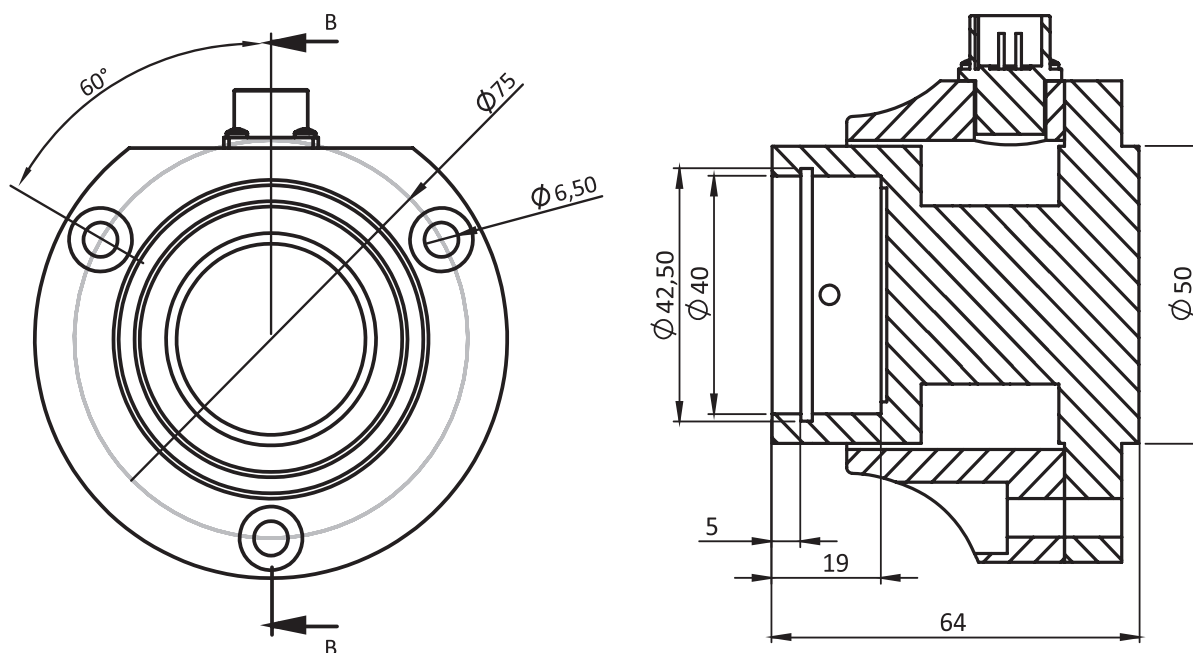


Textile



Textile

TECHNICAL DRAWING



TECHNICAL SPECIFICATIONS

Capacity	20, 50, 100, 200 Kg
Accury Class	C3
Minimum Load	0 kg
Maximum Intervals (nLC)	1000
Minimum Verification Interval	5000
Total Error	$\pm 0.05 \%FS$
Output Sensitivity (FS)	$2.000 \pm 0.005mV/V$
Zero Balance	$\pm 1 \%FS$
Input Resistance	$400 \Omega \pm 30 \Omega$
Output Resistance	$350 \Omega \pm 5 \Omega$
Isolation Resistance	$\leq 10000 M\Omega (1000VDC)$
Compansated Temperature	$-10 \sim +40 \text{ }^{\circ}C$
Operating Temperature	$-30 \sim +70 \text{ }^{\circ}C$
Excitation, Recommended Voltage	10 VDC
Maximum Excitation Voltage (Umax)	15 VDC
Safe Overload	150 % FS
Ultimate Overload	300 % FS
Ingress Protection (EN60529)	IP 66
Element Material	Stainless steel / Alloy Steel
Cable	4x014mm ² 3.5 meter