

DSBI Load Cell

Load cell made of nickel plated steel alloyed or stainless steel.



ABOUT PRODUCT

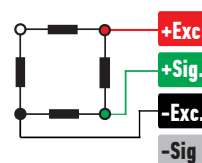
DSBI model load cell is produced from nickel-plated steel alloy or stainless steel with capacities of 5~30 tons.

Bi-directional flexing capability provides much more precise and accurate measurement.

It can also be produced optionally with 0-10 V or 4-20 mA analog outputs.

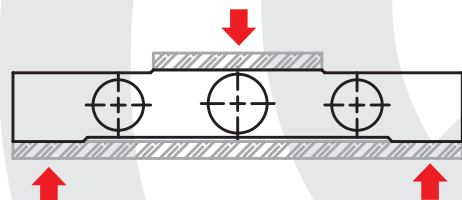
It offers easy use with mounting kits specially.

CONNECTION DIAGRAM



Red	Excitation+ (Input)
Green	Signal+ (Output)
Black	Excitation- (Input)
White	Signal- (Output)

WORK STYLE



APPLICATION AREAS



Logistics and
Transport



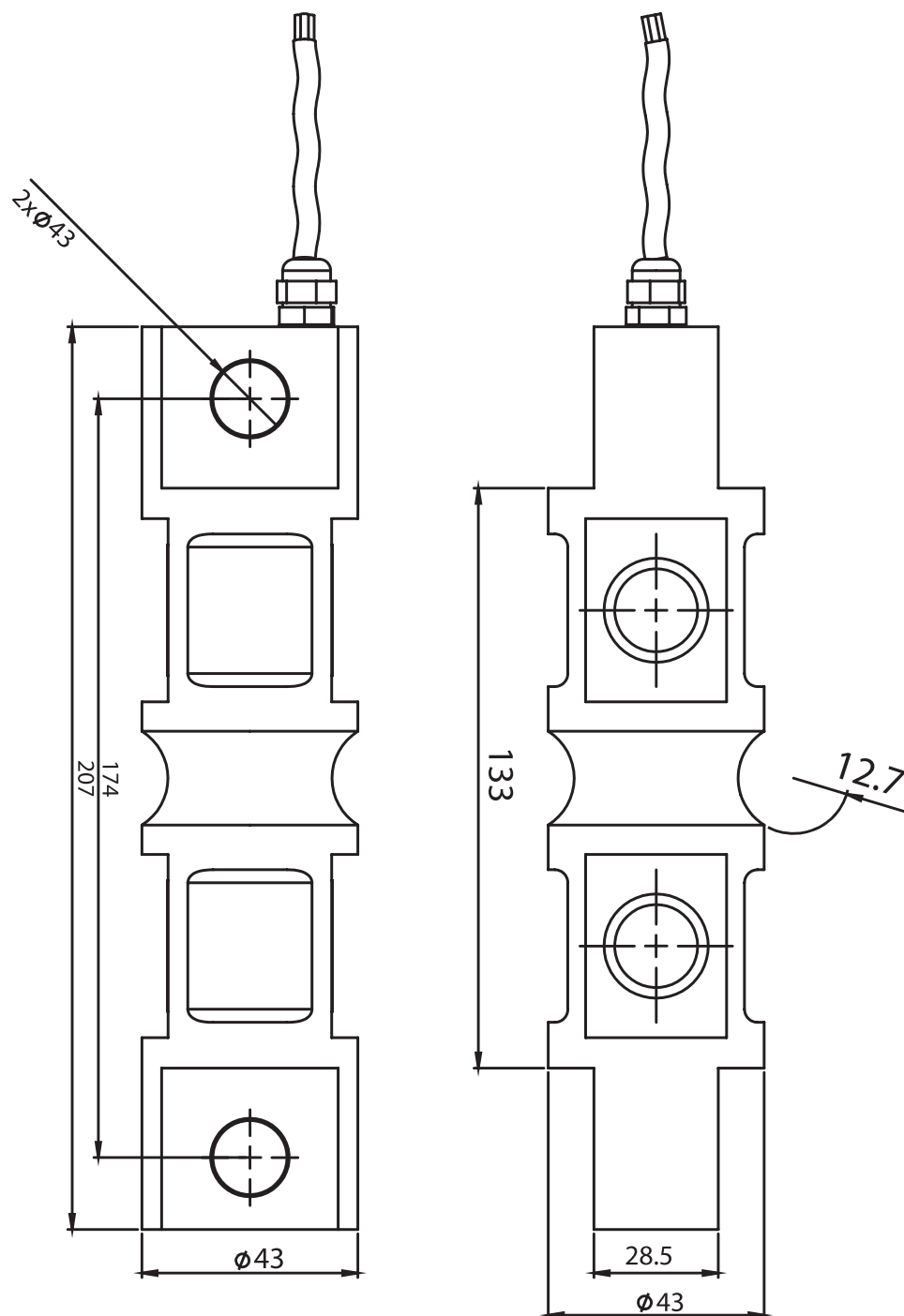
Agriculture And
Livestock

FEATURES

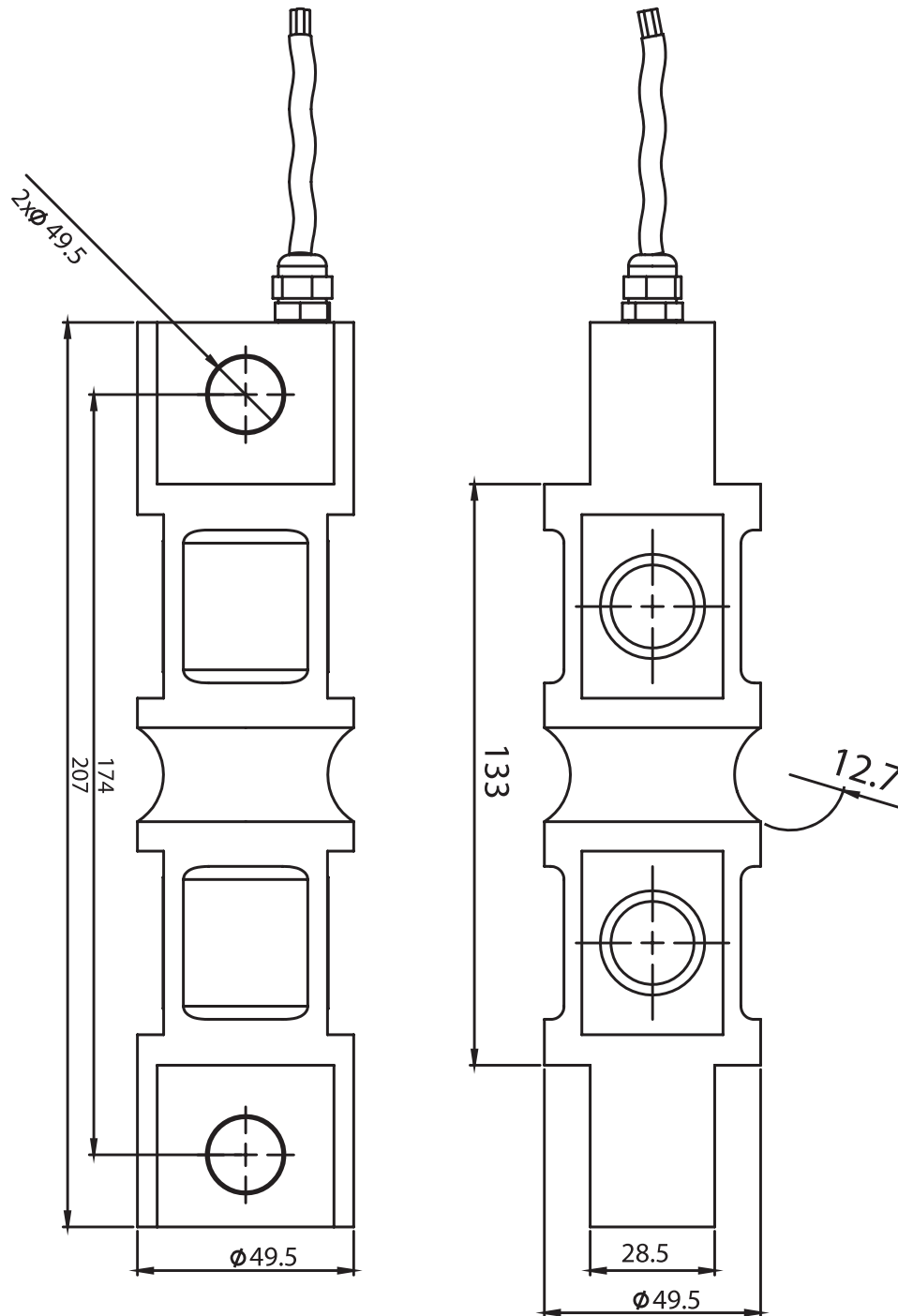
- ✓ IP 68 protection class
- ✓ Plated nickel, steel alloyed
- ✓ Ease of installation

TECHNICAL DRAWING

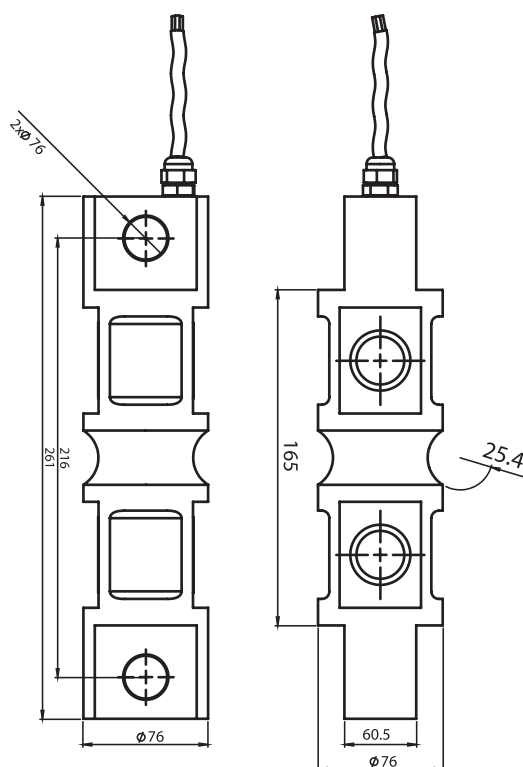
5 Tones



10 Tones



20 - 30 Tones



TECHNICAL SPECIFICATIONS

Capacity	5, 10, 20, 30 Tones
Accury Class	C1
Minimum Load	0 kg
Maximum Intervals (nLC)	1000
Minimum Verification Interval	3000
Total Error	$\pm 0.03 \%FS$
Output Sensitivity (FS)	$2.00 \pm 0.02mV/V$
Zero Balance	$\pm 1 \%FS$
Input Resistance	$750 \Omega \pm 20 \Omega$
Output Resistance	$702 \Omega \pm 3 \Omega$
Isolation Resistance	$\leq 5000 M\Omega (100VDC)$
Compansated Temperature	$-10 \sim +40 \text{ }^{\circ}C$
Operating Temperature	$-30 \sim +70 \text{ }^{\circ}C$
Excitation, Recommended Voltage	10 VDC
Maximum Excitation Voltage (Umax)	15 VDC
Safe Overload	150 % FS
Ultimate Overload	300 % FS
Ingress Protection (EN60529)	IP 68
Element Material	Alloyed Steel / Stainless Steel
Cable	4x0.22mm ²