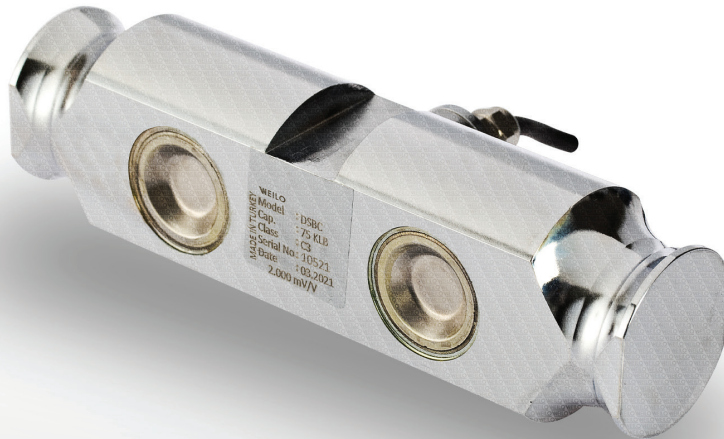


# DSBC Double Shear Beam Load Cell

Load cell made of nickel plated steel alloyed or stainless steel.



## ABOUT PRODUCT

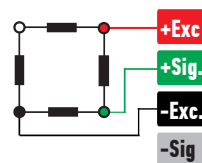
The DSBC model load cell is manufactured from nickel-plated steel alloyed or stainless steel with capacities from 50~75 klb.

Bi-directional flexing capability provides much more precise and accurate measurement.

It can also be produced optionally with 0-10 V or 4-20 mA analog outputs.

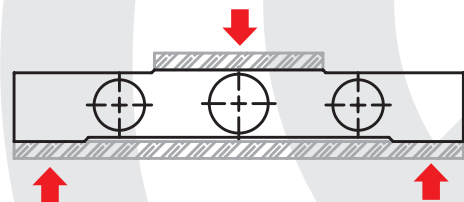
It offers easy use with mounting kits specially.

## CONNECTION DIAGRAM

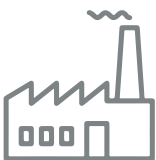


Red	Excitation+ (Input)
Green	Signal+ (Output)
Black	Excitation- (Input)
White	Signal- (Output)

## WORK STYLE



## APPLICATION AREAS

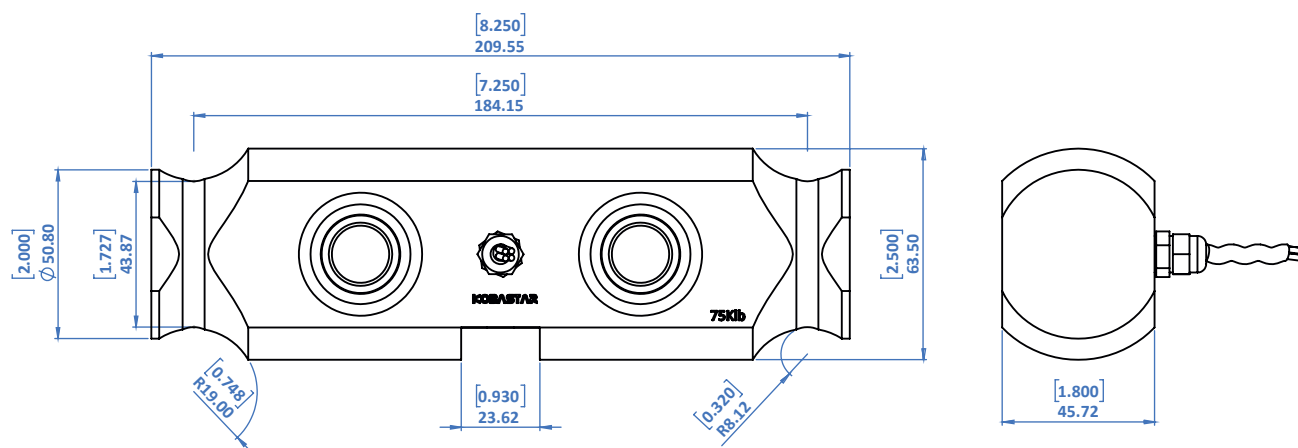


Machinery And  
Industry

## FEATURES

- ✓ IP 68 protection class
- ✓ Plated nickel, steel alloyed
- ✓ Ease of installation

## TECHNICAL DRAWING



## TECHNICAL SPECIFICATIONS

Capacity	50, 75, Klb
Accury Class	C3
Minimum Load	0 kg
Maximum Intervals (nLC)	3000
Minimum Verification Interval	10000
Total Error	±0.02 %FS
Output Sensitivity (FS)	2.00 ± 0.05mV/V
Zero Balance	± 1 %FS
Input Resistance	800 Ω ± 20 Ω
Output Resistance	702 Ω ± 5 Ω
Isolation Resistance	≤ 5000 MΩ (100VDC)
Compansated Temperature	-10 ~ + 40 °C
Operating Temperature	-30 ~ + 70 °C
Excitation, Recommended Voltage	10 VDC
Maximum Excitation Voltage (Umax)	15 VDC
Safe Overload	150 % FS
Ultimate Overload	300 % FS
Ingress Protection (EN60529)	IP 68
Element Material	Alloyed Steel / Stainless Steel
Cable	4x022mm <sup>2</sup>