

AS Double Shear Beam Load Cell



Load cell produced of nickel plated steel alloyed in 1~2 tones capacities, providing precise and accurate measurement.



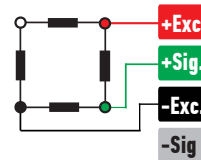
ABOUT PRODUCT

AS type load cell is produced from nickel-plated steel alloy in 1~2 ton capacities.

It provides a much more precise and accurate measurement opportunity with its bidirectional flexibility.

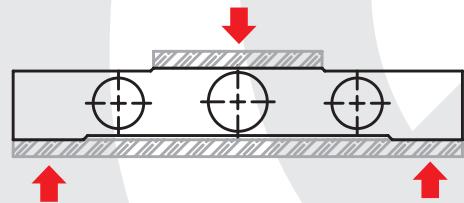
It can also be produced optionally.

CONNECTION DIAGRAM

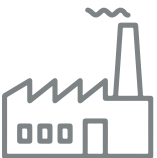


Red	Excitation+ (Input)
Green	Signal+ (Output)
Black	Excitation- (Input)
White	Signal- (Output)

WORK STYLE



UYGULAMA ALANLARI



Machinery And Industry

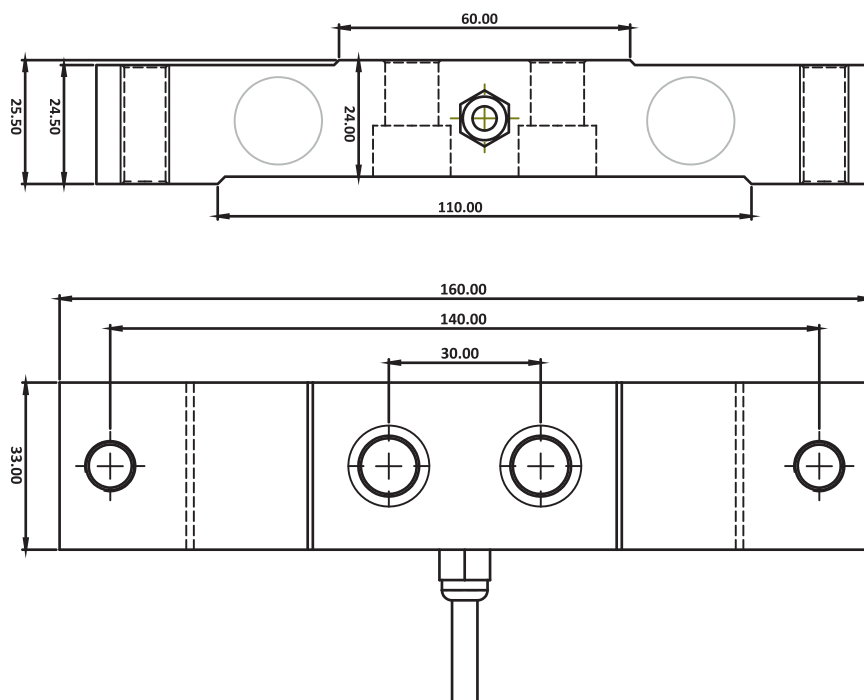


Stone, Sand And Mines

FEATURES

- ✓ IP 68 protection class
- ✓ Plated nickel, steel alloyed
- ✓ Ease of installation

TECHNICAL DRAWING



TECHNICAL SPECIFICATIONS

Capacity	1, 2 Tones
Accury Class	C3
Minimum Load	0 kg
Maximum Intervals (nLC)	2000
Minimum Verification Interval	4000
Total Error	± 0.05 %FS
Output Sensitivity (FS)	2.00 ± 0.02 mV/V
Zero Balance	± 1 %FS
Input Resistance	$750 \Omega \pm 20 \Omega$
Output Resistance	$702 \Omega \pm 3 \Omega$
Isolation Resistance	≤ 5000 M Ω (100VDC)
Compansated Temperature	-10 ~ + 40 °C
Operating Temperature	-30 ~ + 70 °C
Excitation, Recommended Voltage	10 VDC
Maximum Excitation Voltage (Umax)	15 VDC
Safe Overload	150 % FS
Ultimate Overload	300 % FS
Ingress Protection (EN60529)	IP 68
Element Material	Alloyed Steel / Stainless Steel
Cable	4x022mm ²