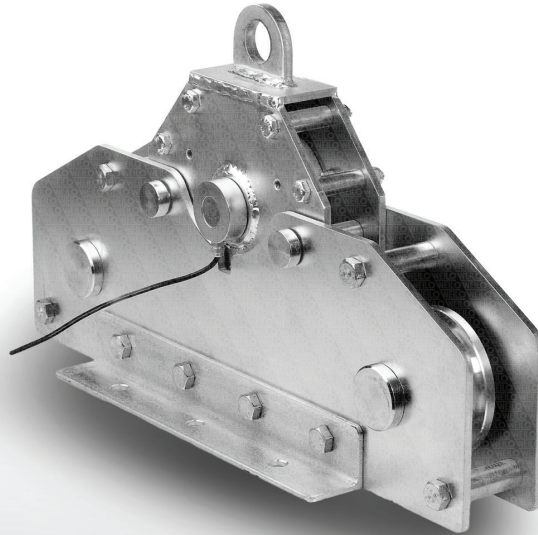


RLT Running Line Tensiometer

Specially designed load cell for moving rope tension tests.



www.weilo.com.tr



ABOUT PRODUCT

RLT is a load cell mechanism that special designed to use in moving rope strain tests.

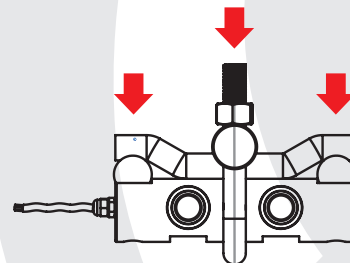
It can be special produced the capacity of 1 ton to 100 tons and dimensions.

In addition WEILO offers to product the load cell 0- 10V,4-20 mA analog output or RS485 Modbus-RTU digital output.

CONNECTION DIAGRAM



WORK STYLE



APPLICATION AREAS



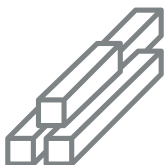
Crane overload systems -
Rope tension measurement tests



Chemistry and
Petrochemistry



Concrete Batching
Plants And Construction



Iron Steel Metal



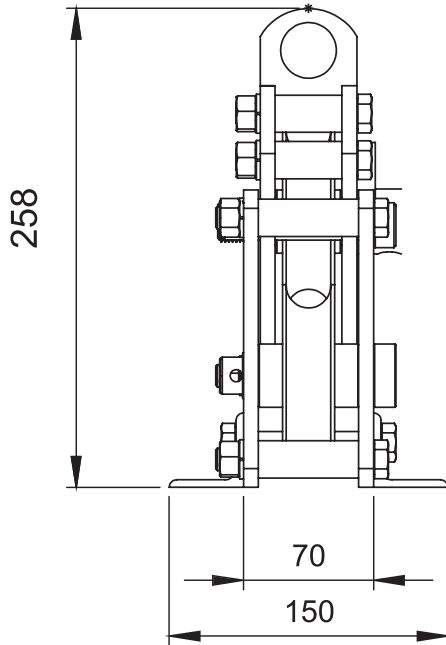
Machinery And
Industry

FEATURES

- ✓ IP 66 protection class
- ✓ Plated nickel, alloyed steel
- ✓ Ease of installation

TECHNICAL DRAWING

3-6 Tones



TECHNICAL SPECIFICATIONS

Capacity	1 tones ~ 50 tones
Accury Class	-
Minimum Load	0 kg
Maximum Intervals (nLC)	-
Minimum Verification Interval	-
Total Error	$\pm 1\%$ FS
Output Sensitivity (FS)	$1.2 \pm 0.2\text{mV/V}$, 20 mA, 10 V
Zero Balance	$\pm 1\%$ FS, 4 mA, 0 V
Input Resistance	$370\ \Omega \pm 20\ \Omega$
Output Resistance	$352\ \Omega \pm 3\ \Omega$
Isolation Resistance	$\leq 5000\ \text{M}\Omega$ (100VDC)
Compansated Temperature	-10 ~ + 40 °C
Operating Temperature	-30 ~ + 70 °C
Excitation, Recommended Voltage	10 VDC, 24 VDC, 24 VDC
Maximum Excitation Voltage (Umax)	15 VDC, 28 VDC, 28 VDC
Safe Overload	150 % FS
Ultimate Overload	300 % FS
Ingress Protection (EN60529)	IP 66
Element Material	Alloyed Steel / Stainless Steel
Cable	4x022mm ² , 5-Pin Connector