

FSM Compression Load Cell



Load cell with bidirectional operation (compression-tension) produced with high capacity and high precision.



ABOUT PRODUCT

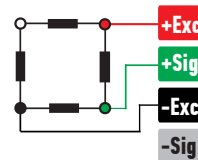
FSM is a load cell has the features of double direction operation (push-pull) produced with high accuracy and high precision.

It is produced completely locally in our Konya factory with capacity options from 200 kg to 3 tons.

Alloyed steel is cleaned with the sandblasting method after being cured by heat treatment and after it is completely homogenized, it is coated with nickel in order to be more resistant to corrosion, so it offers trouble-free use in the most difficult conditions.

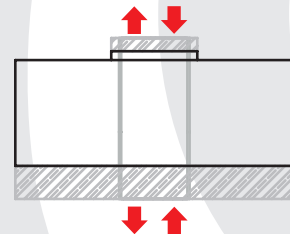
FSM has minimalist design adapts to a variety of industrial application environments.

CONNECTION DIAGRAM

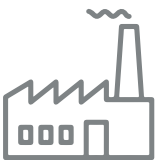


Red	Excitation+ (Input)
Green	Signal+ (Output)
Black	Excitation- (Input)
White	Signal- (Output)

WORK STYLE



APPLICATION AREAS



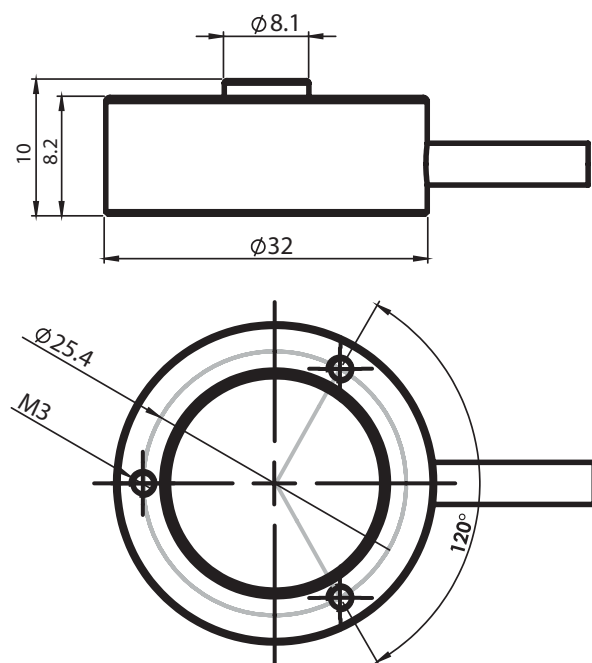
Machine and Industry

FEATURES

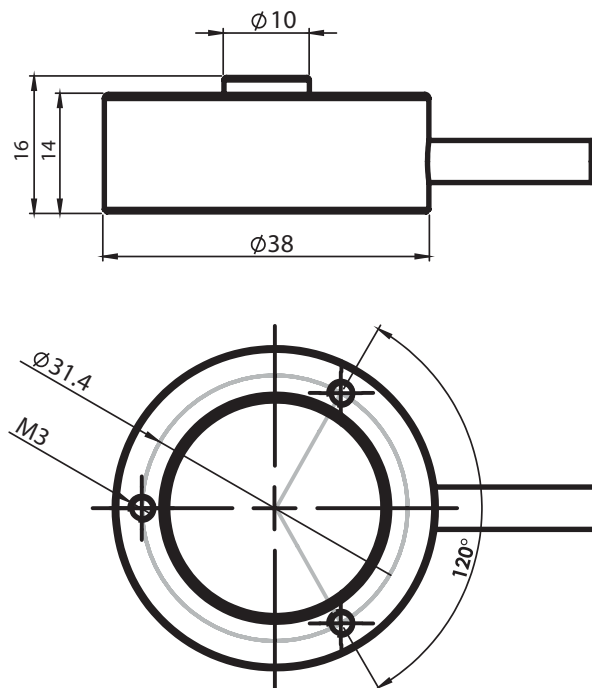
- ✓ IP 67 protection class
- ✓ Plated nickel, alloyed steel
- ✓ Ease of installation

TECHNICAL DRAWING

200 - 500 Kg



1000 - 2500 Kg



TECHNICAL SPECIFICATION

Capacity	0.2, 0.5, 1, 2.5 Tones
Accuracy Class	0.5%
Minimum Load	0 kg
Maximum Intervals (nLC)	-
Minimum Verification Interval	-
Total Error	±0.05 %FS
Output Sensitivity (FS)	1.00 ± 0.005mV/V
Zero Balance	± 1 %FS
Input Resistance	750 Ω ± 20 Ω
Output Resistance	702 Ω ± 3 Ω
Isolation Resistance	≤ 5000 MΩ (100VDC)
Compensated Temperature	-10 ~ + 40 °C
Operating Temperature	-30 ~ + 70 °C
Excitation, Recommended Voltage	10 VDC
Maximum Excitation Voltage (Umax)	15 VDC
Safe Overload	150 % FS
Ultimate Overload	300 % FS
Ingress Protection (EN60529)	IP 67
Element Material	Alloyed Steel / Stainless Steel
Cable	4x0.22mm ²