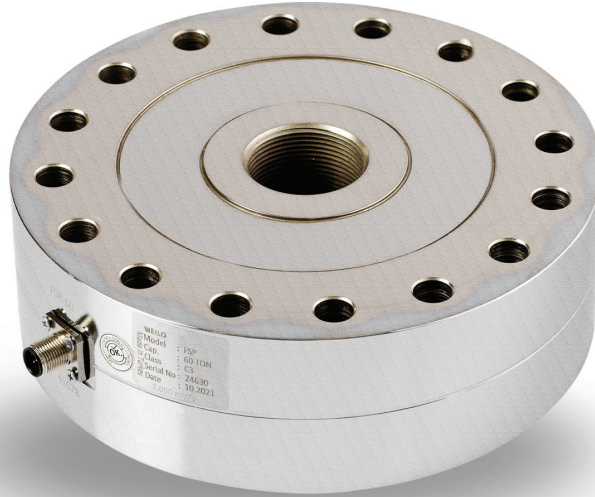


FSP Spoke Type Load Cell



Load cell with bidirectional operation (compression-tension) produced with high capacity and high precision.



ABOUT PRODUCT

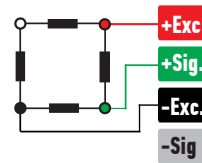
FSP is a load cell has the features of double direction operation (compression-tensile) produced with high accuracy and high precision.

It is produced completely our factory in Konya with capacity options from 1 ton to 100 tones.

Alloy steel is cleaned with the sandblasting method after being cured by heat treatment and after it is completely homogenized, it is coated with nickel in order to be more resistant to corrosion, so it offers trouble-free use in the most difficult conditions.

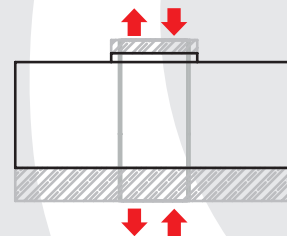
Optionally available in stainless chrome steel.

CONNECTION DIAGRAM

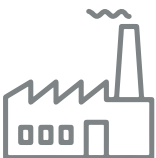


Red	Excitation+ (Input)
Green	Signal+ (Output)
Black	Excitation- (Input)
White	Signal- (Output)

WORK STYLE



APPLICATION AREAS



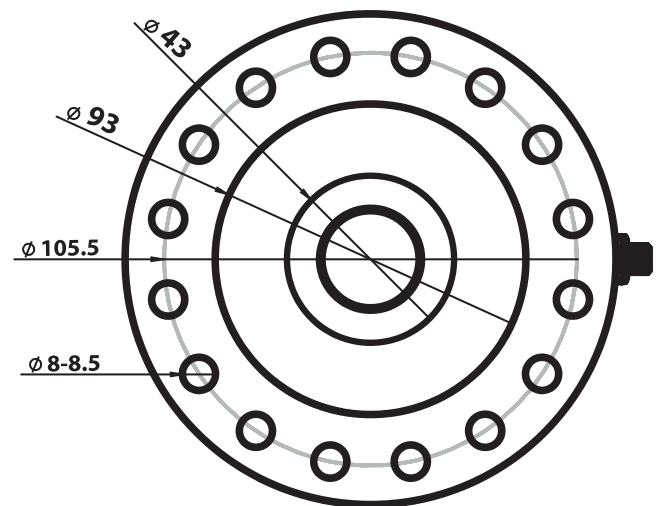
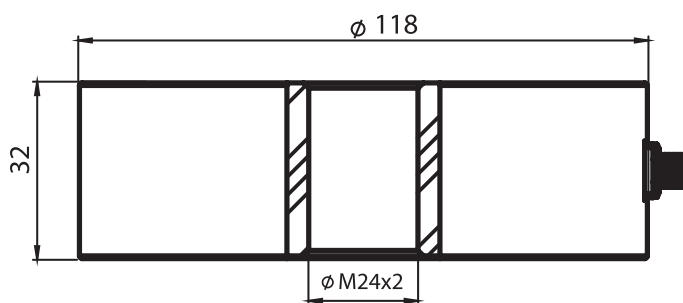
Machinery and
Indusrty

FEATURES

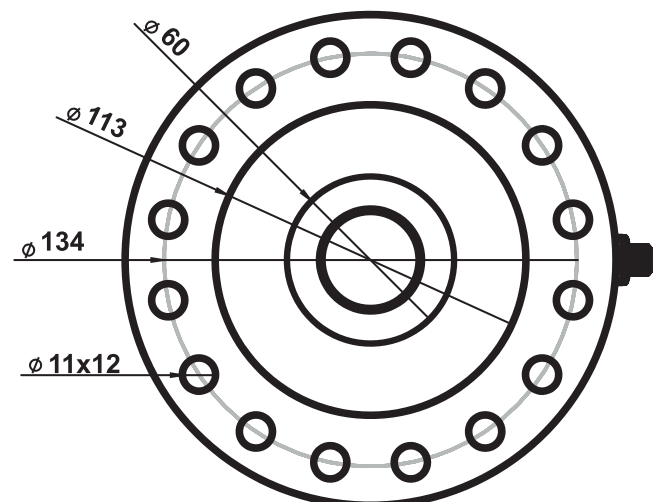
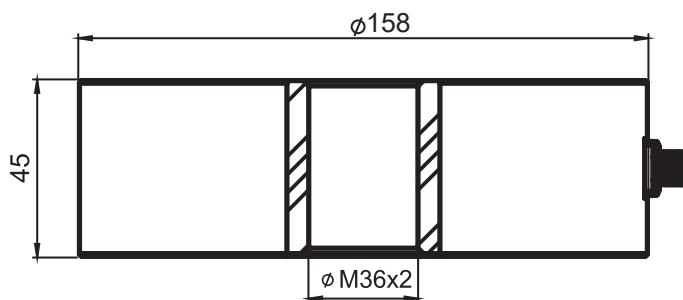
- ✓ IP 67 / IP 68 protection class
- ✓ Plated nickel, alloyed steel
- ✓ Ease of installation

TECHNICAL DRAWING

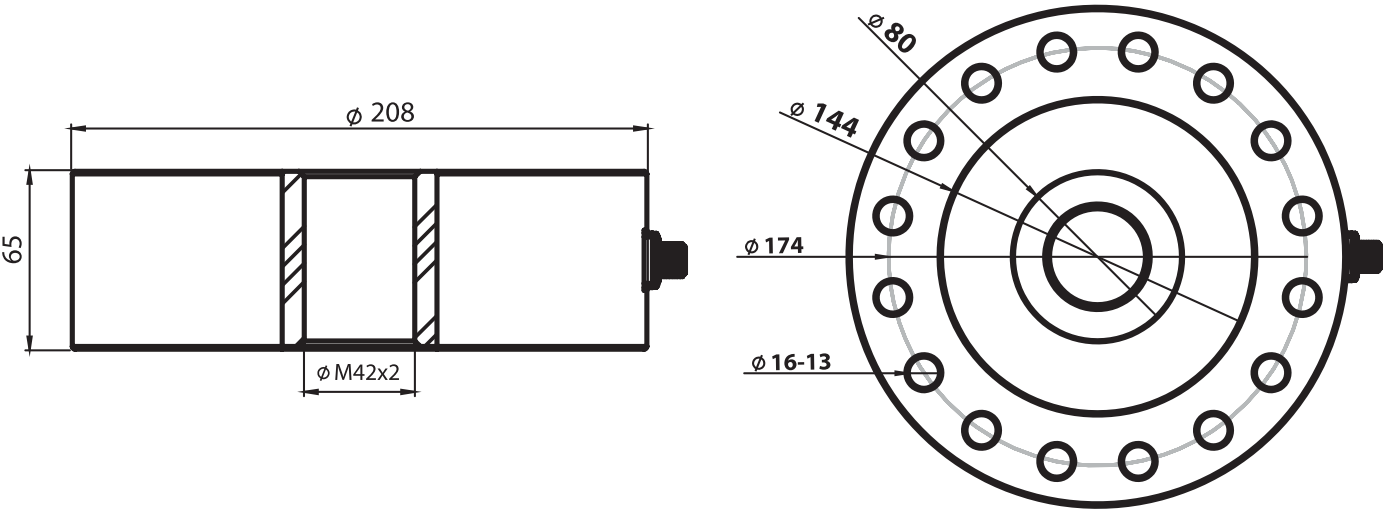
1 - 2 - 3 - 5 Tones



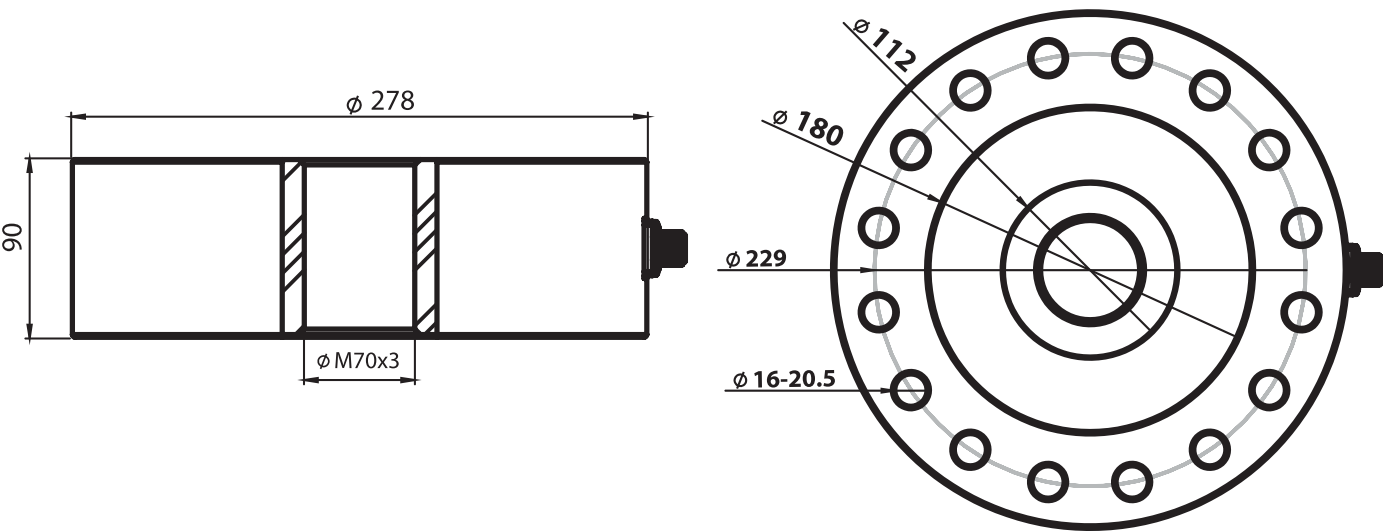
10 - 20 Tones



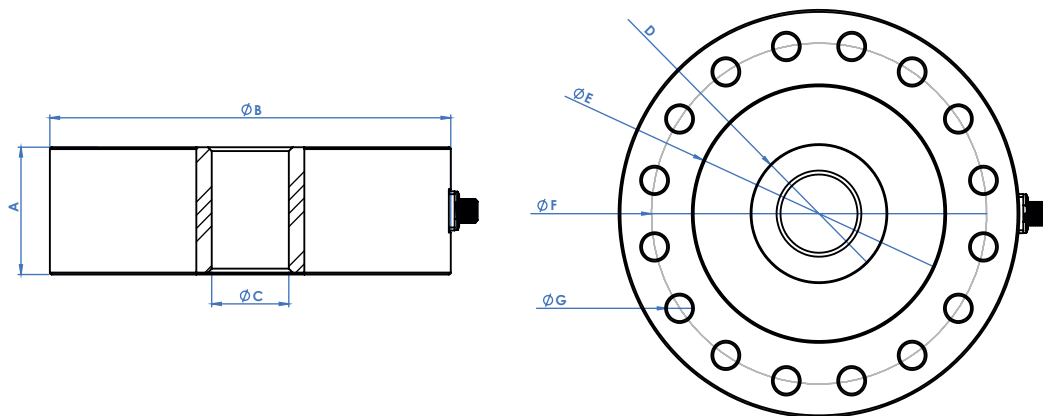
30 - 50 - 60 Tones



100 Tones



FSP Spoke Type Load Cell



CAPACITY	A	B	C	D	E	F	G
1 - 2 - 5 TONES	32	118	M24x2	43	93	105,5	8,5x8
10 - 20 TONES	45	158	M36x2	60	113	134	11x12
30 - 50 - 60 TONES	65	208	M42x2	80	144	174	13x16
100 TONES	90	278	M70x3	122	180	229	20,5x16

TECHNICAL SPECIFICATION

Capacity	1 ~ 100 Tones
Accuracy Class	C1
Minimum Load	0 kg
Linearity	$\leq \pm 0.05 \%FS$
Repeability	$\leq \pm 0.05 \%FS$
Total Error	0.05 ~ 0.25
Output Sensitivity (FS)	$2.00 \pm 0.005mV/V$
Zero Balance	$\leq \pm 0.1 \%FS$
Input Resistance	$750 \Omega \pm 30 \Omega$
Output Resistance	$703 \Omega \pm 5 \Omega$
Isolation Resistance	$\leq 5000 M\Omega (100VDC)$
Compansated Temperature	-10 ~ + 40 °C
Operating Temperature	-30 ~ + 70 °C
Excitation, Recommended Voltage	10 VDC
Maximum Excitation Voltage (Umax)	15 VDC
Safe Overload	150 % FS
Ultimate Overload	300 % FS
Ingress Protection (EN60529)	IP 67 / IP 68
Element Material	Alloyed Steel / Stainless Steel
Cable	4x022mm ²