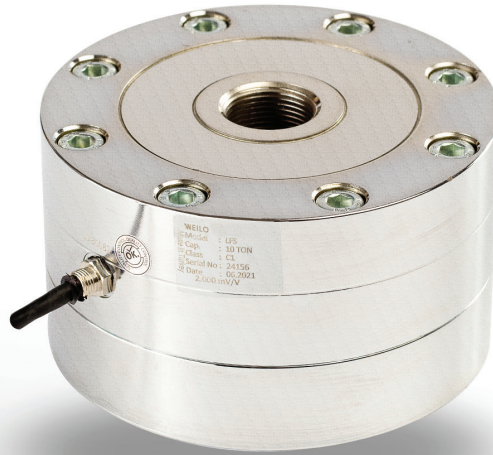


LFS Compression - Tension Load Cell



www.weilo.com.tr

Load cell with bidirectional operation (compression-tension) produced with high capacity and high precision.



ABOUT PRODUCT

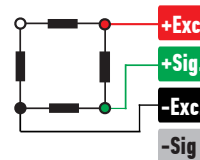
LFS is a load cell with high capacity and high accuracy, and has a dual-direction operation (compression-tension) feature.

It is produced completely domestically in our Konya factory with capacity options between 20 and 60 tons.

After alloyed steel is heat-treated and cleaned by sandblasting, it is completely homogenized and coated with Nickel to be more resistant to corrosion, providing trouble-free use even under the toughest conditions.

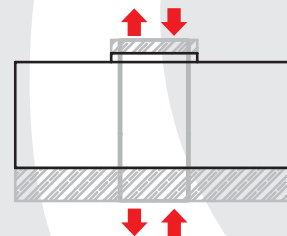
LFS provides seamless use in multiple weighing applications with its specially produced mounting accessories.

CONNECTION DIAGRAM



Red	Excitation+ (Input)
Green	Signal+ (Output)
Black	Excitation- (Input)
White	Signal- (Output)

WORK STYLE



APPLICATION AREAS



Agriculture and
Livestock



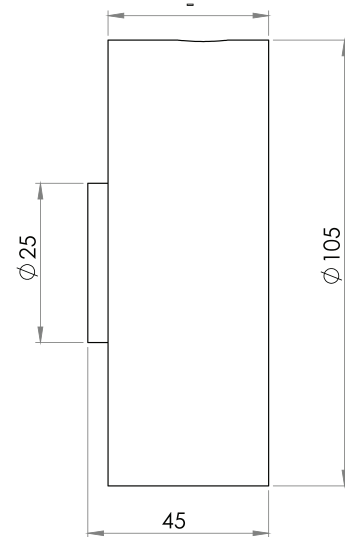
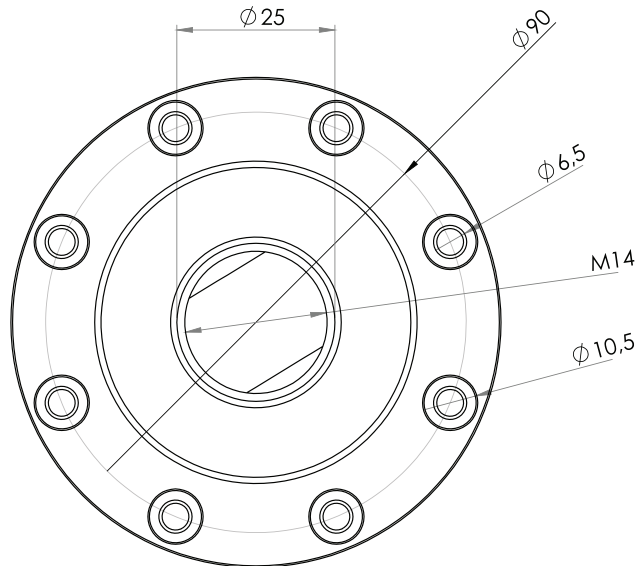
Logistics and
Transport

FEATURES

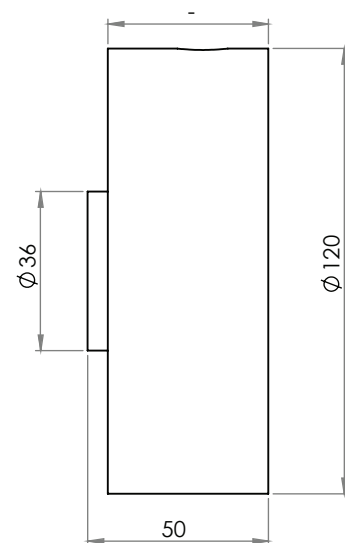
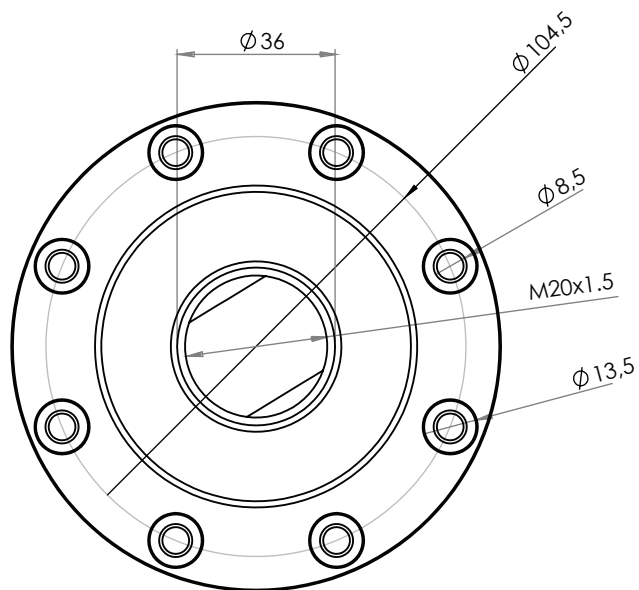
- ✓ IP 67 / IP 68 protection class
- ✓ Plated nickel, alloyed steel
- ✓ Ease of installation

TECHNICAL DRAWING

2 Tones

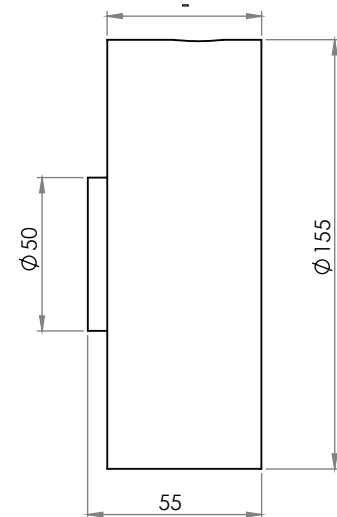
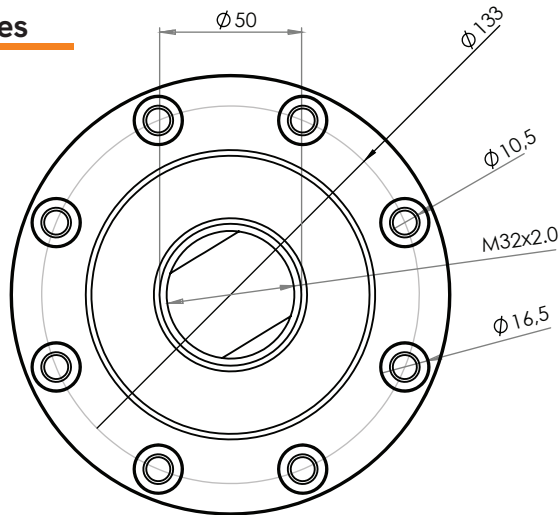


5 Tones

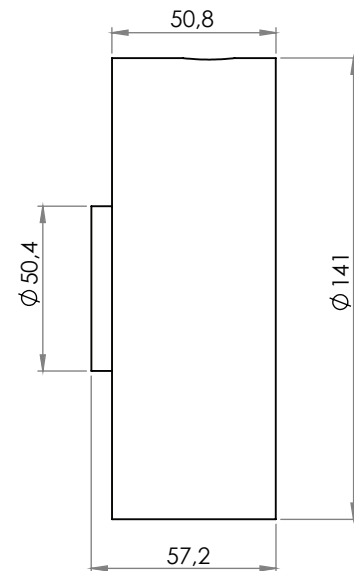
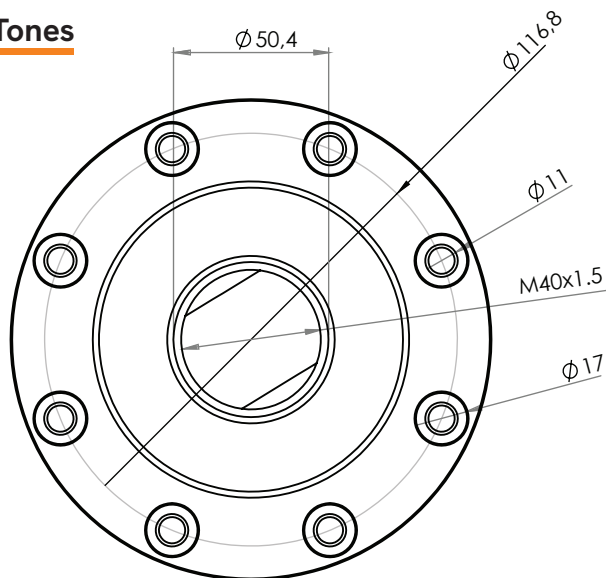


LFS Compression Tension Load Cell

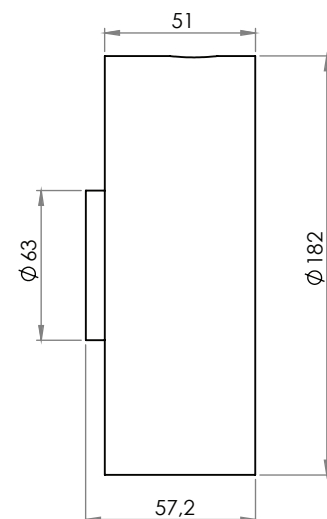
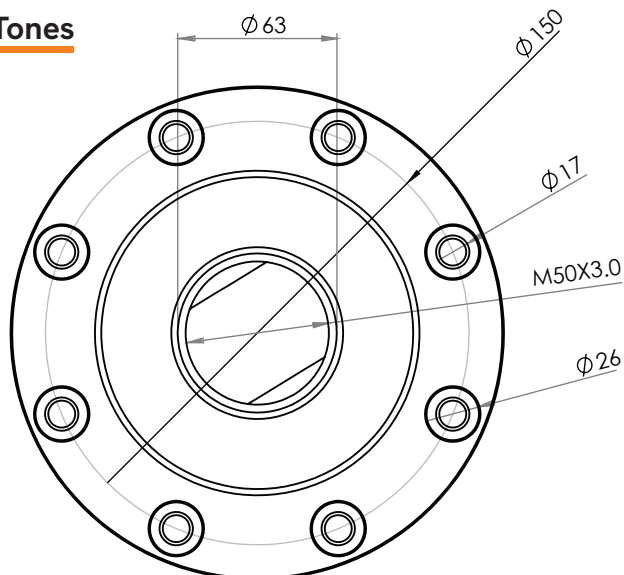
10 Tones



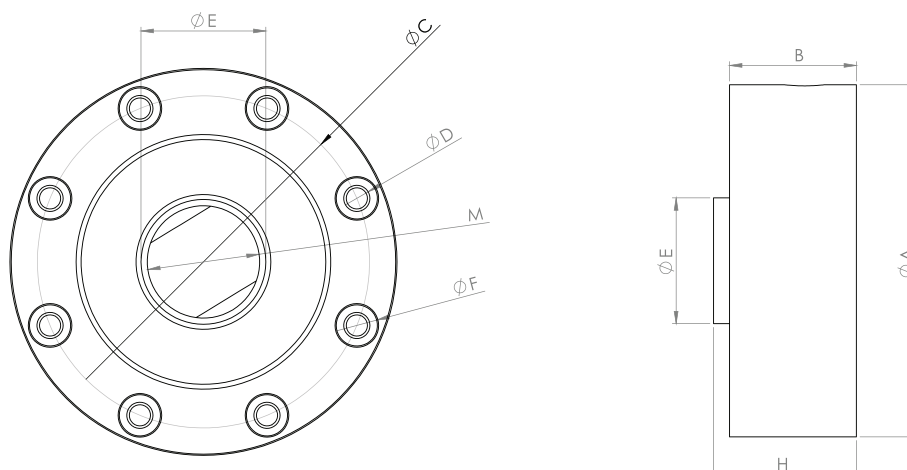
20-30 Tones



50-60 Tones



LFS Compression Tension Load Cell



CAPACITY	M	ØA	H	ØC	ØD	ØE	ØF	B
2 TONES	M14	105	45	90	6,5	25	10,5	-
5 TONES	M20X1.5	120	50	104,5	8,5	36	13,5	-
10 TONES	M32X2.0	155	55	133	10,5	50	16,5	-
20-30 TONES	M40X1.5	141	57,2	116,8	11	50,4	17	50,8
50-60 TONES	M50X3.0	182	57,5	150	17	63	26	51

TECHNICAL SPECIFICATIONS

Capacity	20, 30, 50, 60 Ton
Accuracy Class (ISO 376)	C1
Minimum Load	0 kg
Linearity	$\leq \pm 0.05 \%FS / \leq \pm 0.1 \%FS$
Repeability	$\leq \pm 0.05 \%FS$
Total Error	0.05 ~ 0.25
Output Sensitivity (FS)	3.00 mV/V \pm 0.1 % F.S.
Zero Balance	$\leq \pm 0.1 \%FS$
Input Resistance	750 Ω \pm 30 Ω
Output Resistance	703 Ω \pm 5 Ω
Isolation Resistance	$\leq 5000 M\Omega$ (100VDC)
Compansated Temperature	-10 ~ + 40 °C
Operating Temperature	-30 ~ + 70 °C
Excitation, Recommended Voltage	10 VDC
Maximum Excitation Voltage (Umax)	15 VDC
Safe Overload	150 % FS
Ultimate Overload	300 % FS
Ingress Protection (EN60529)	IP 67 / IP 68
Material	Alloyed steel
Cable	4x022mm ²