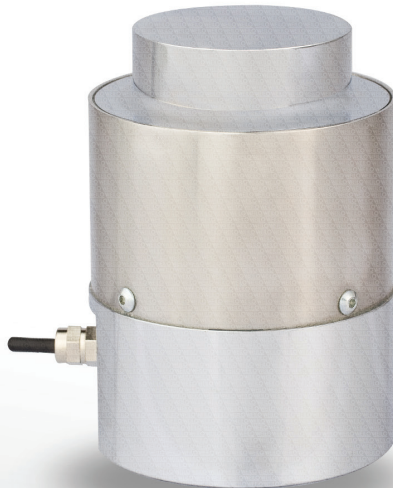


WTH Compression Type Load Cell



Pressure type load cell manufactured using high quality stainless steel or special alloyed steel.



ABOUT PRODUCT

The WTH Load Cell is a compression-type load cell made of high-quality stainless steel or special alloyed steel with a capacity ranging from 10 to 1000 tons.

The alloyed steel is heat-treated, sandblasted, and then coated with nickel to provide greater corrosion resistance and years of trouble-free use in industrial environments.

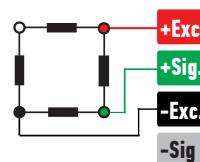
The WTH load cell can be easily used in multiple fields with its specially designed mounting kits.

Unlike other compression-type load cells, the WTH load cell is designed with a column structure that has more strain gauges, making it more stable and sensitive under heavier loads.

In addition to the standard 4x0.22mm cable, it can be produced with armored or Ex-Proof silicone cables as an additional option.

Armored cables are more resistant to external factors and provide complete protection against rodent damage.

CONNECTION DIAGRAM



Red	Excitation+ (Input)
Green	Signal+ (Output)
Black	Excitation- (Input)
White	Signal- (Output)

WORK STYLE



FEATURES

- ✓ IP 66 protection class
- ✓ Plated nickel, alloyed steel
- ✓ Ease of installation

WTH Compression Type Load Cell

APPLICATION AREAS



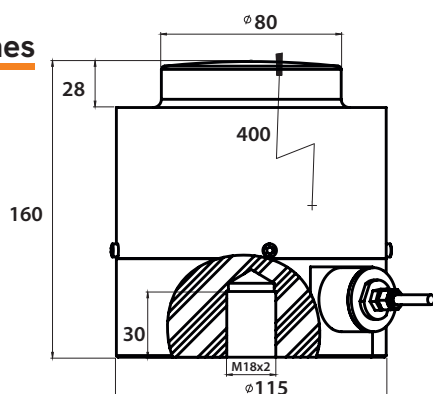
Agriculture and
Livestock



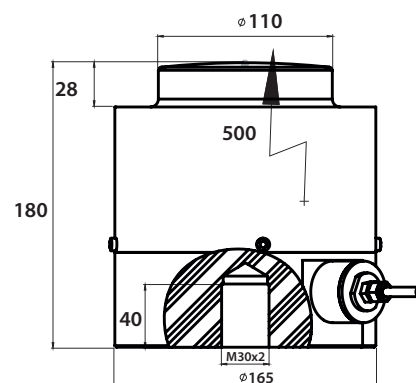
Logistics and
Transport

TECHNICAL DRAWING

100-200 Tones



300-500 Tones



TECHNICAL SPECIFICATIONS

Capacity	100, 200, 300, 500, 750, 1000 Tones
Accuracy Class	C1
Minimum Load	0 kg
Maximum Intervals (nLC)	1000
Minimum Verification Interval	5000
Total Error	$\pm 0.05 \%FS$
Output Sensitivity (FS)	$2.00 \pm 0.05mV/V$
Zero Balance	$\pm 1 \%FS$
Input Resistance	$400 \Omega \pm 30 \Omega$
Output Resistance	$350 \Omega \pm 5 \Omega$
Isolation Resistance	$\leq 5000 M\Omega (100VDC)$
Compensated Temperature	$-10 \sim +40 \text{ }^{\circ}C$
Operating Temperature	$-30 \sim +70 \text{ }^{\circ}C$
Excitation, Recommended Voltage	10 VDC
Maximum Excitation Voltage (U _{max})	15 VDC
Safe Overload	150 % FS
Ultimate Overload	300 % FS
Ingress Protection (EN60529)	IP 66
Element Material	Alloyed Steel / Stainless Steel
Cable	4x0.22mm ²

750-1000 Tones

