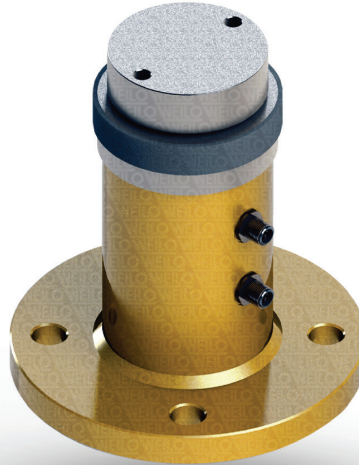


# WCL Compression Type Digital Load Cell

Compression type load cell used in the field of vehicle scales, produced from 10 tones to 50 tones.



## ABOUT PRODUCT

WCL Digital Load Cell is a printing-type load cell produced in the range of 10 to 50 tons, with IP 68 stainless and water resistance class.

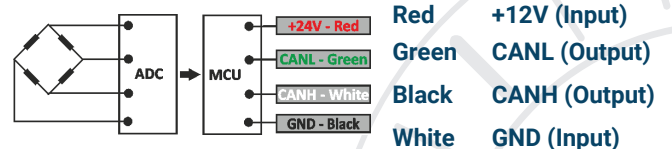
If digital load cells are used in vehicle scales, there is no need to use any mounting kit.

Thanks to the embedded ADC and communication card in digital load cells, load cells can communicate digitally with weighing indicators via CanOpen.

It is possible to connect the load cells to each other in a chain with 2 connectors in the WCL Digital Load Cell, so there is no need to use an external junction box.

With the connector, up to 32 load cells can be connected to each other.

## CONNECTION DIAGRAM



## WORK STYLE



## FEATURES

- ✓ Digital load cell
- ✓ IP 68 protection class
- ✓ Plated nickel, alloyed steel
- ✓ Ease of installation

## APPLICATION AREAS

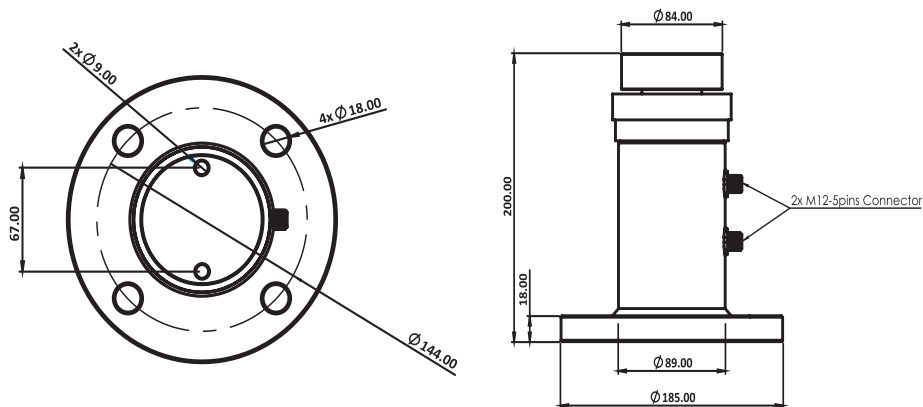


Agriculture And  
Livestock



Logistics And  
Transport

## TECHNICAL DRAWING



## TECHNICAL SPECIFICATIONS

Capacity	10, 20, 25, 30, 40, 50 Tones
Accracy Class	C4
Minimum Load	0 kg
Maximum Intervals (nLC)	4000
Minimum Verification Interval	10000
Total Error	$\pm 0.01$ %FS
Output Sensitivity (FS)	$2.00 \pm 0.005$ mV/V
Zero Balance	$\pm 1$ %FS
Input Resistance	$700 \Omega \pm 15 \Omega$
Output Resistance	$700 \Omega \pm 5 \Omega$
Isolation Resistance	$\leq 5000$ M $\Omega$ (100VDC)
Compansated Temperature	-10 ~ + 40 °C
Operating Temperature	-30 ~ + 70 °C
Excitation, Recommended Voltage	12 VDC
Maximum Excitation Voltage (Umax)	18 VDC
Safe Overload	150 % FS
Ultimate Overload	300 % FS
Ingress Protection (EN60529)	IP 68
Element Material	Alloyed Steel / Stainless Steel
Cable	4x022mm <sup>2</sup>