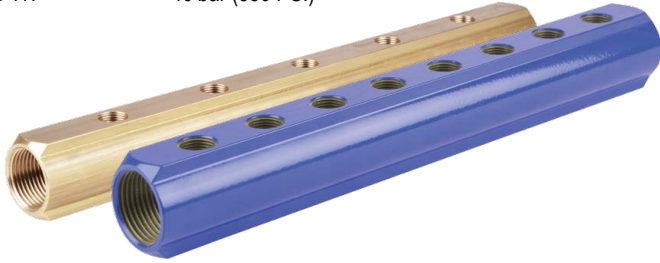


**rtc** 117 BRASS COLLECTORS - MESSING VERTEILER

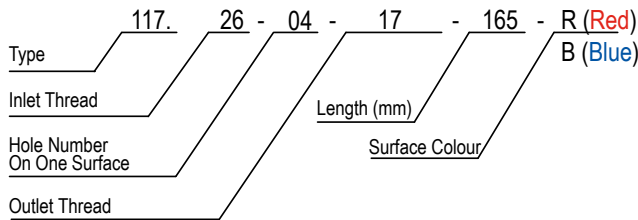
Temperature Range - Temperaturbereich  
-50°C +300°C (-58°F +572°F)

Max. Working Pressure - Max. Betriebsdruck  
rtc 117 40 bar (580 PSI)



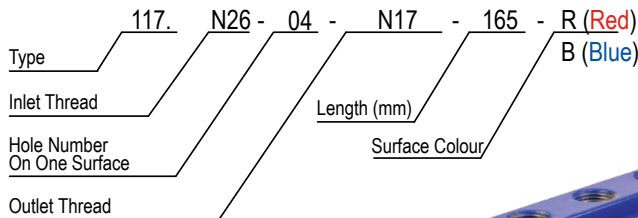
**rtc** Example Coding - Beispielcodierung

117 BSP Thread (Standart Brass Collectors)



117 NPT Thread (Brass Collectors)

ONLY Available for 3/4" - NUR für 3/4 verfügbar



Thread Size Explanations

- BSP=G
- NPT=N
- (1/4" = 13)
- (3/8" = 17)
- (1/2" = 21)
- (3/4" = 26)
- (1" = 33)
- (1-1/4" = 42)
- (1-1/2" = 48)
- (2" = 60)



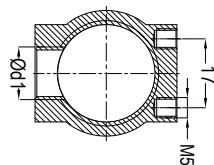
Collector Carrier

Order No:

117 CC 70 - (For 117.26 & 117.33)

117 CC 90 - (For 117.26 & 117.33)

117 CC 150 - (For 117.42)



Ød	Order No / Bestellnr.	Ød1	L	L1	L2		
3/4	117.26-04-13-150	1/4	150	30	70		
	117.26-05-13-180						
	117.26-06-13-210						
	117.26-07-13-240						
	117.26-08-13-270						
	117.26-09-13-300						
	117.26-10-13-330						
	117.26-11-13-360						
	117.26-12-13-390						
	117.26-04-17-165		3/8			165	35
	117.26-05-17-200						
	117.26-06-17-235						
	117.26-07-17-270						
	117.26-08-17-305						
117.26-09-17-340							
117.26-10-17-375							
117.26-11-17-410							
117.26-12-17-445							
117.33-04-13-165	1/4	165		35	70		
117.33-05-13-200							
117.33-06-13-235							
117.33-07-13-270							
117.33-08-13-305							
117.33-09-13-340							
117.33-10-13-375							
117.33-11-13-410							
117.33-12-13-445							
117.33-04-17-165		3/8	165			35	
117.33-05-17-200							
117.33-06-17-235							
117.33-07-17-270							
117.33-08-17-305							
117.33-09-17-340							
117.33-10-17-375							
117.33-11-17-410							
117.33-12-17-445							
117.33-04-21-210	1/2		210	50	70		
117.33-05-21-260							
117.33-06-21-310							
117.33-07-21-360							
117.33-08-21-410							
117.33-09-21-460							
117.33-10-21-510							
117.33-11-21-560							
117.33-12-21-610							
117.33-16-21-810							
117.33-20-21-1010							
117.42-04-17-196		3/8	196			40	150
117.42-05-17-236							
117.42-06-17-276							
117.42-08-17-356							
117.42-10-17-436							
117.42-12-17-516							
117.42-16-17-676							
117.42-04-21-226	1/2		226	50			
117.42-05-21-276							
117.42-06-21-326							
117.42-07-21-376							
117.42-08-21-426							
117.42-10-21-526							
117.42-12-21-626							

